

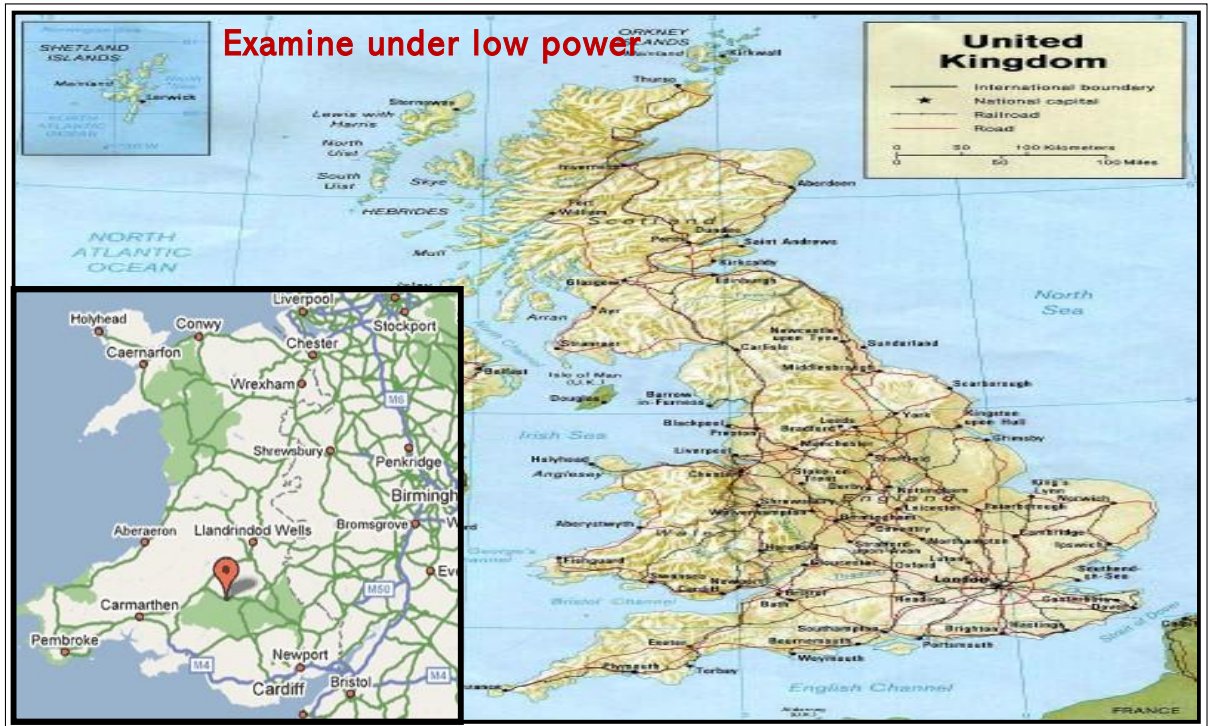
Histology atlas of normal tissues



Dr Phil Bryant

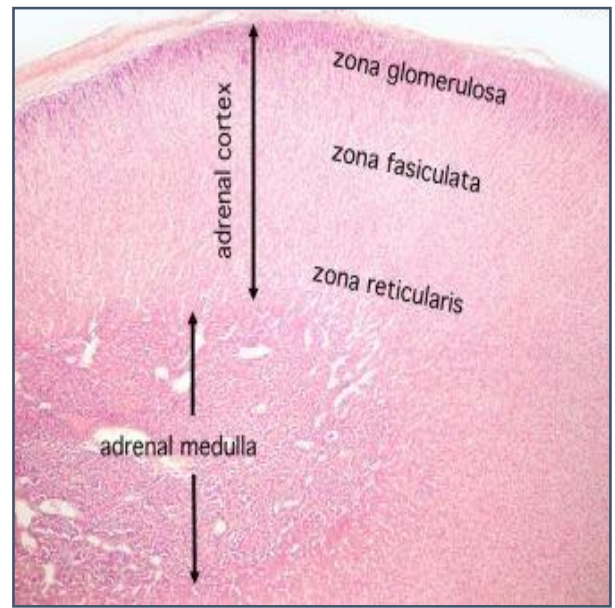
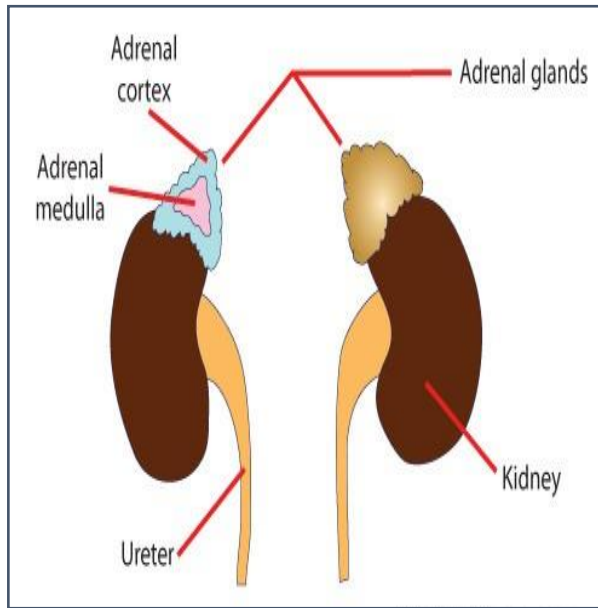
Wales, UK

2023

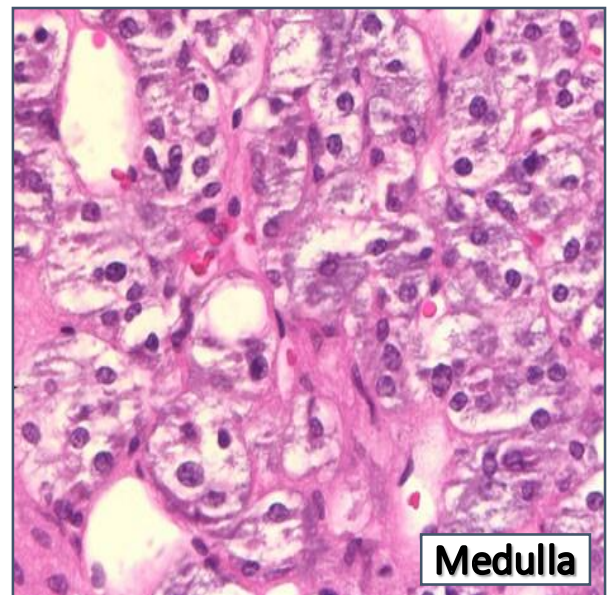
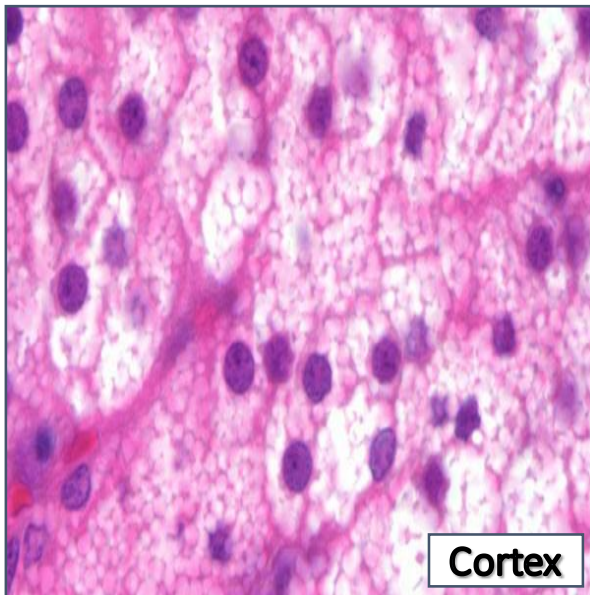


Increase magnification

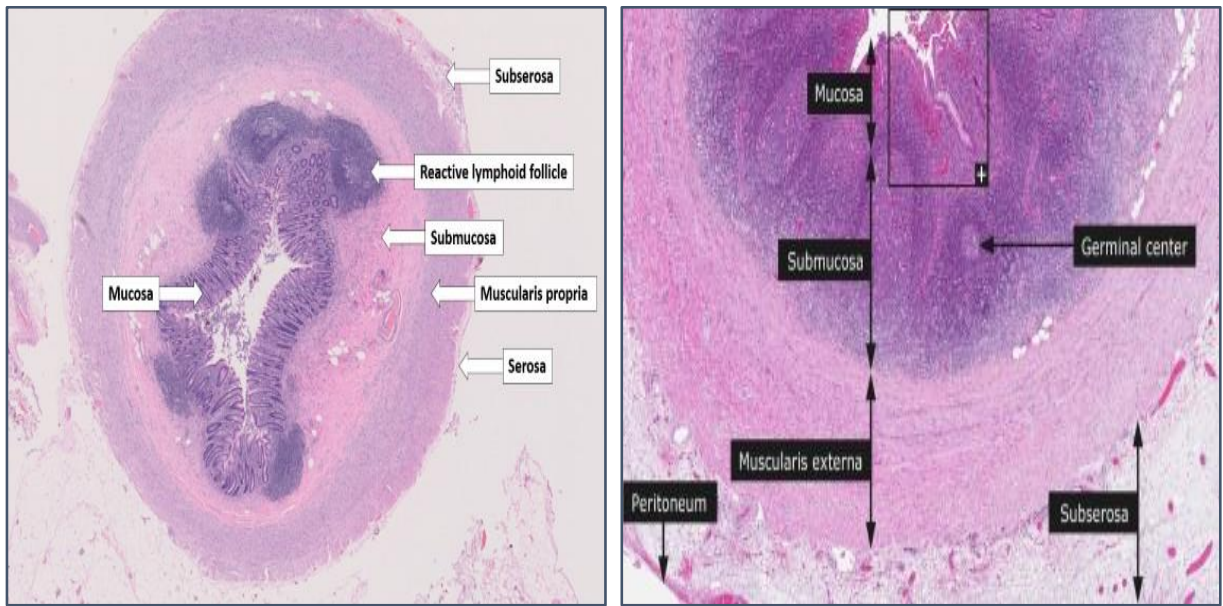
Adrenal gland



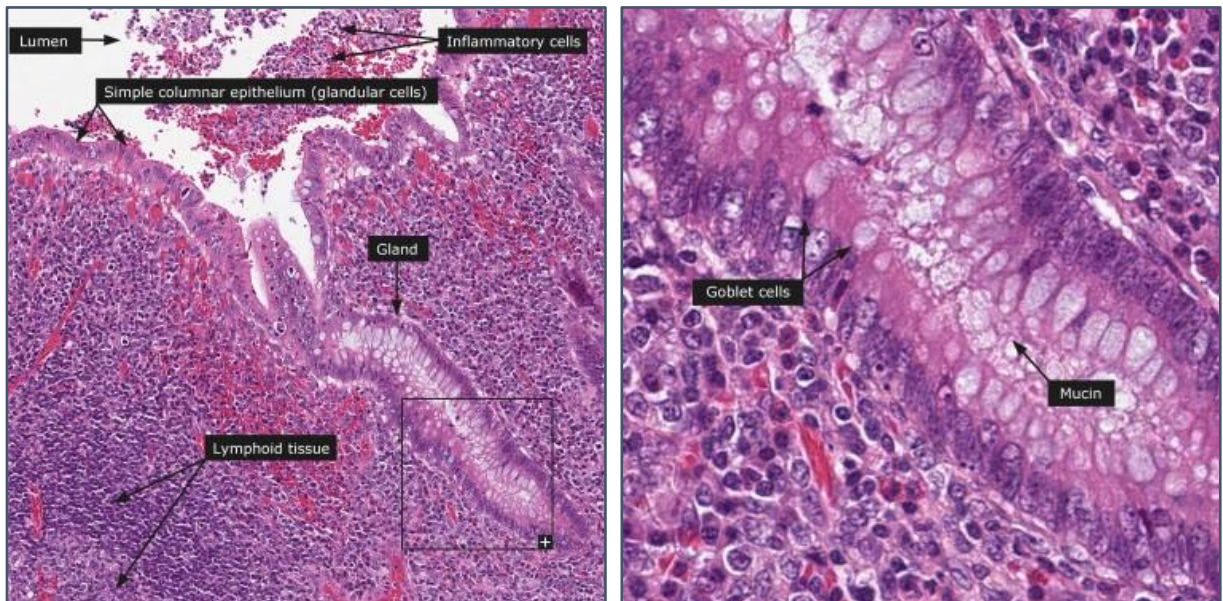
Adrenal gland



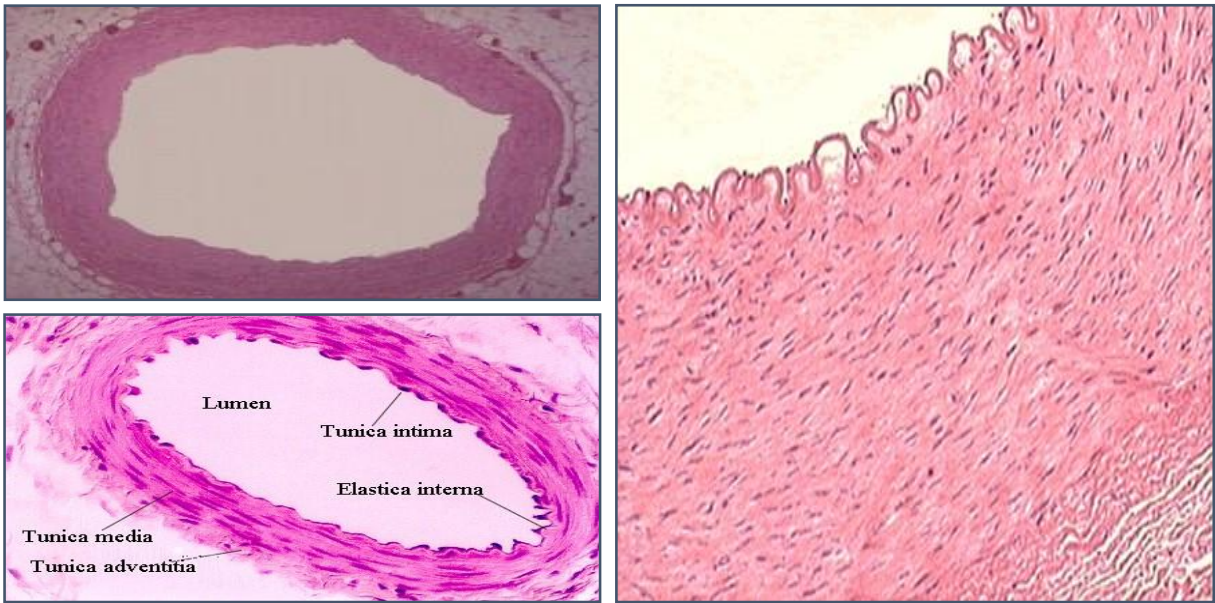
Appendix



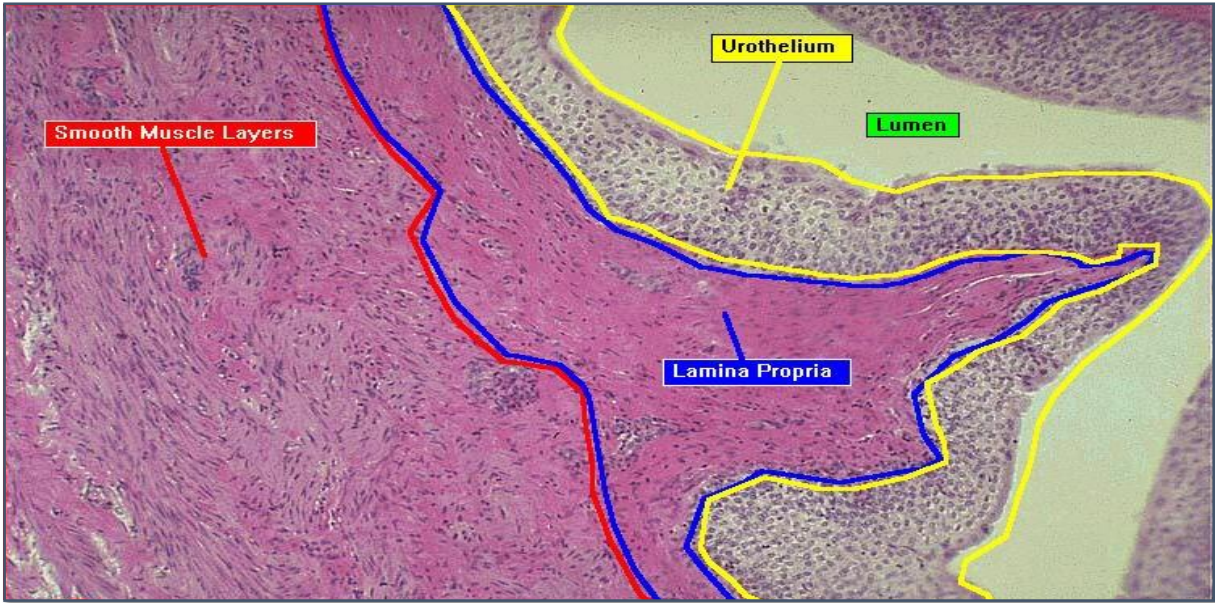
Appendix



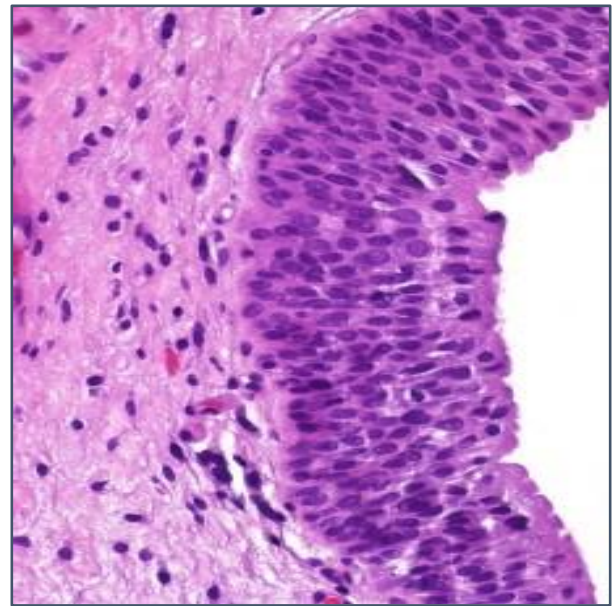
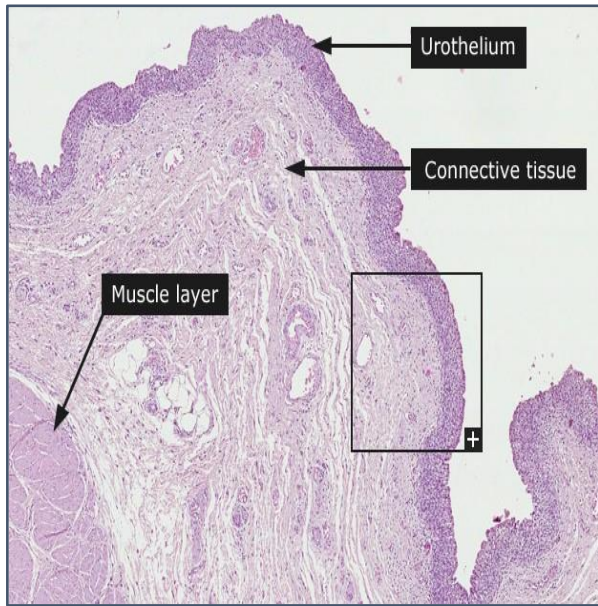
Artery



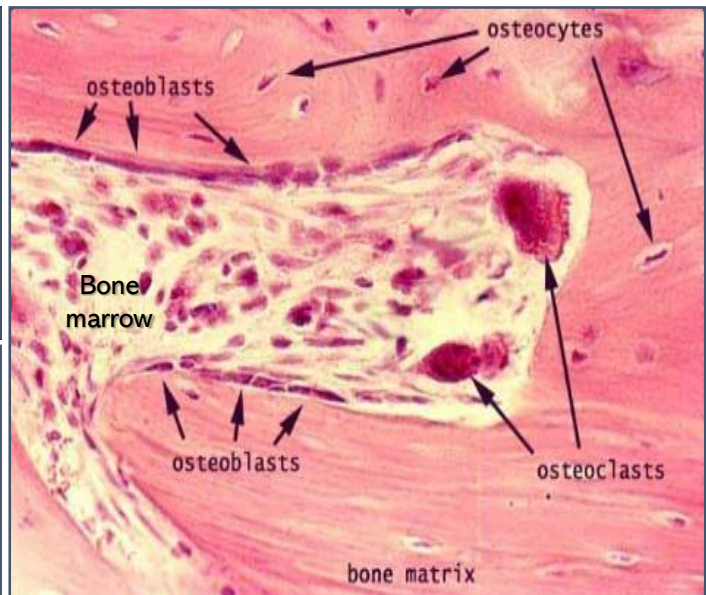
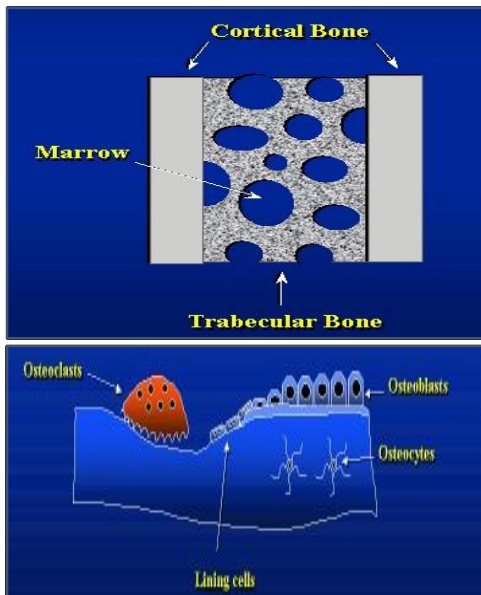
Bladder



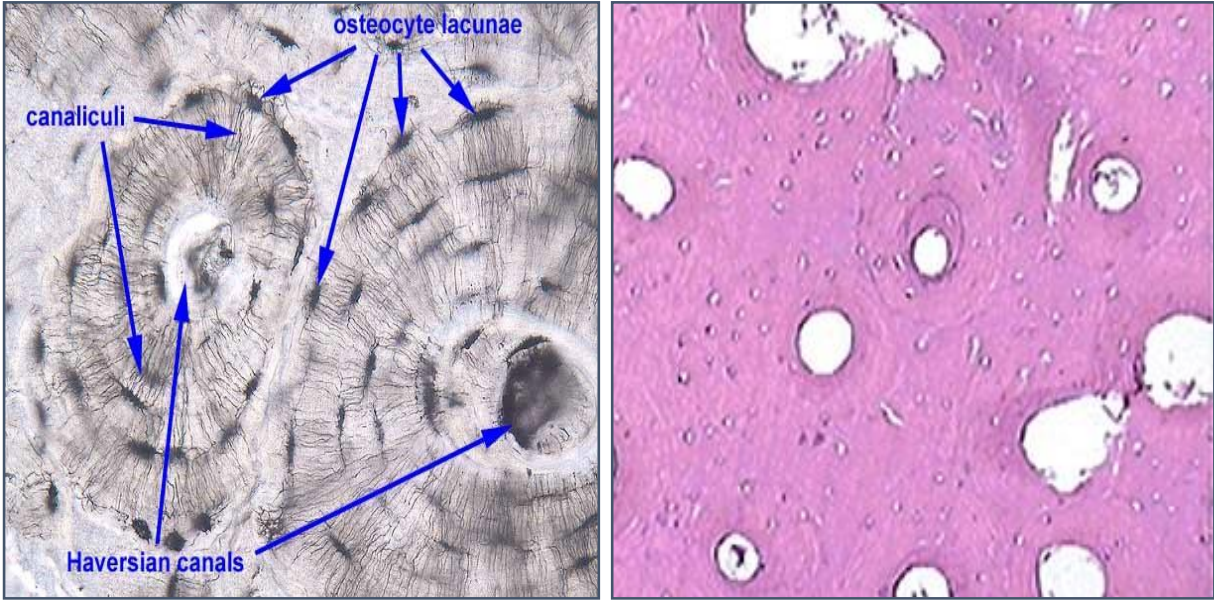
Bladder



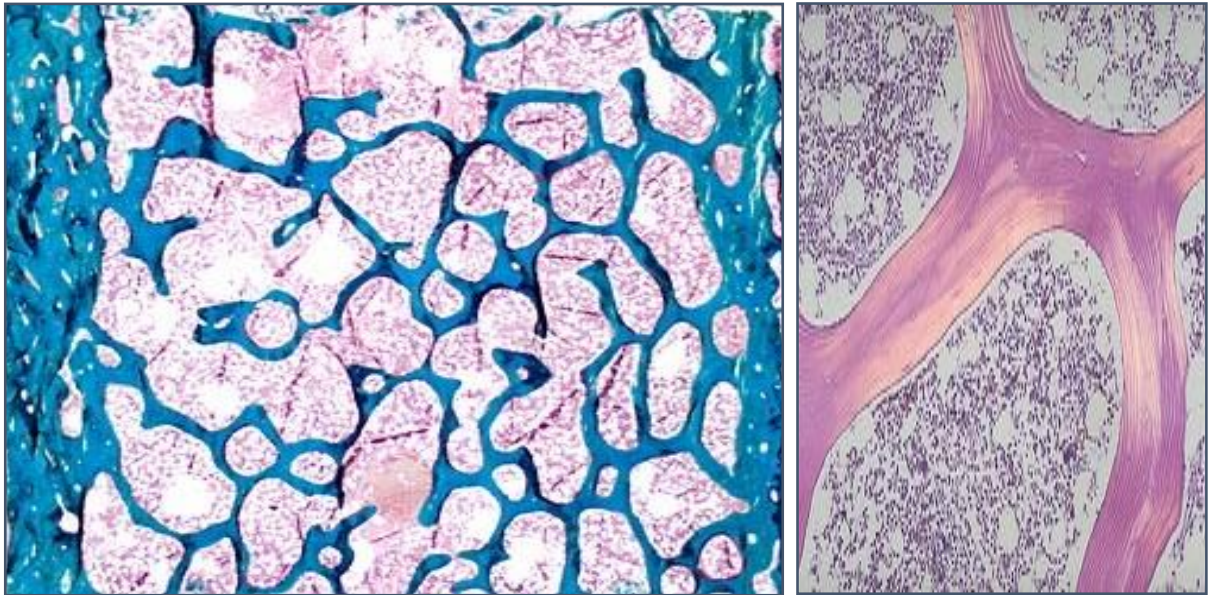
Bone



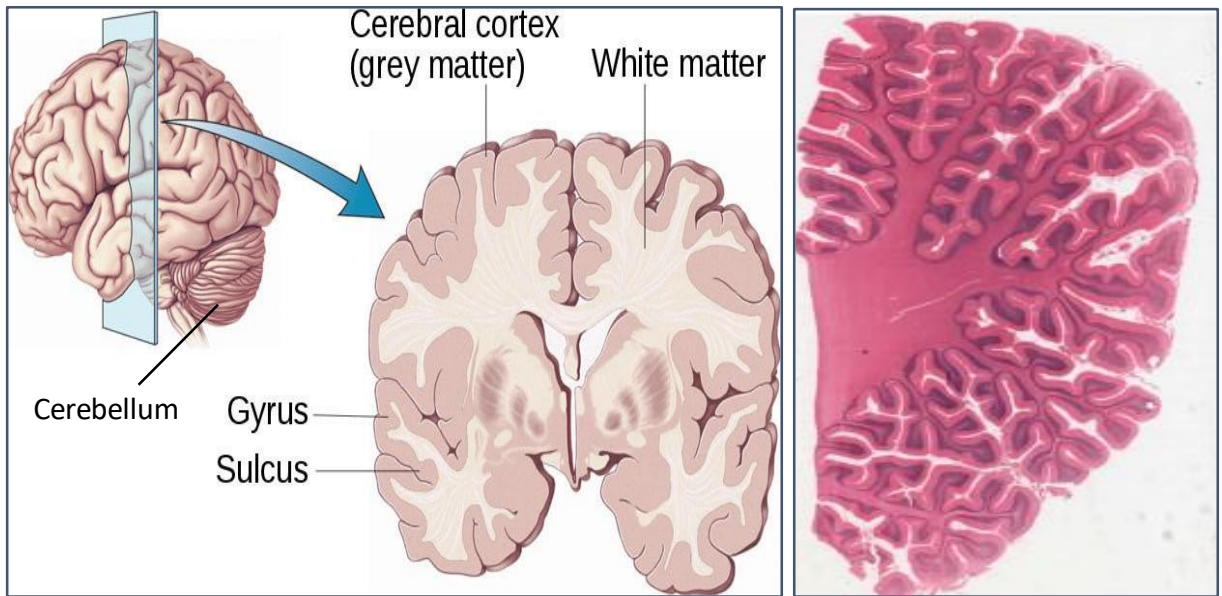
Bone (cortical)



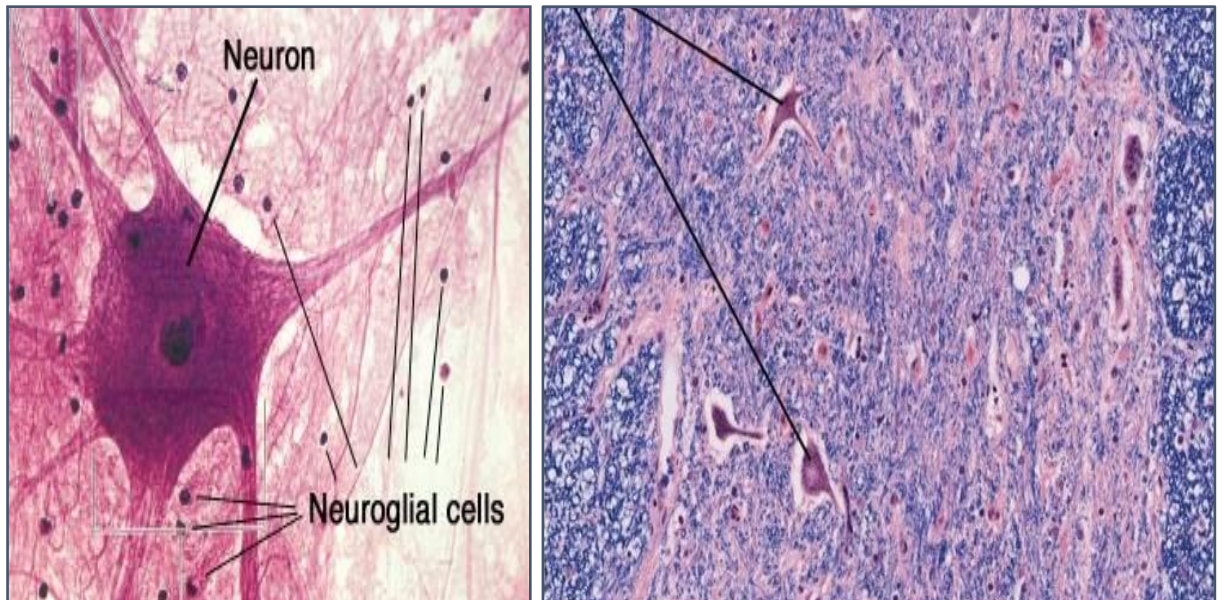
Bone (trabecular)



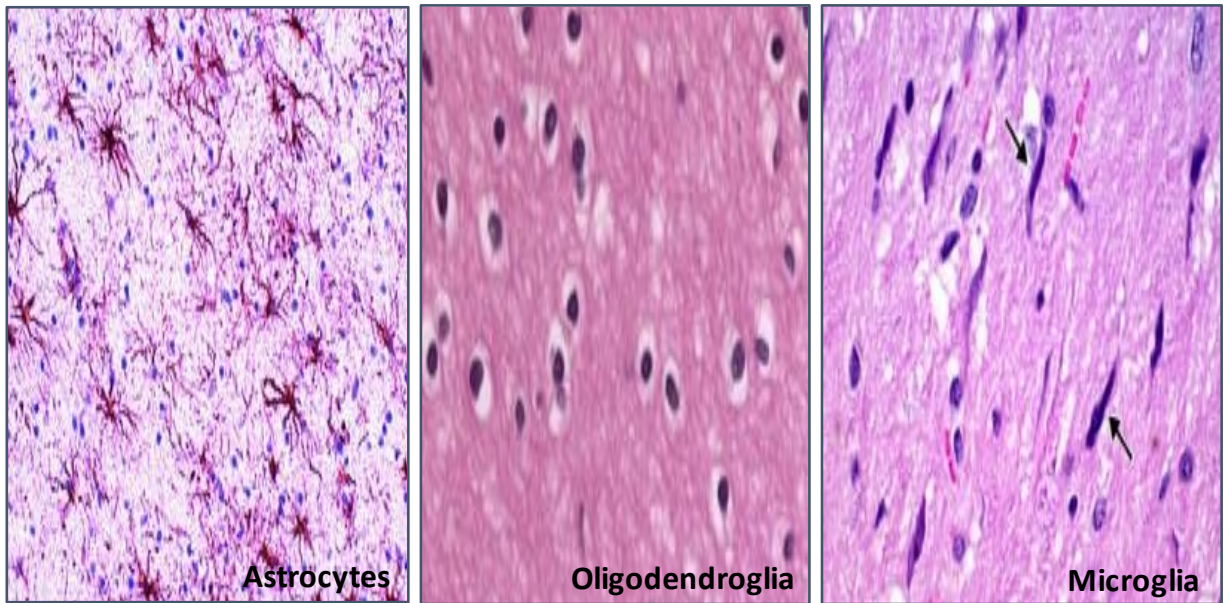
Brain



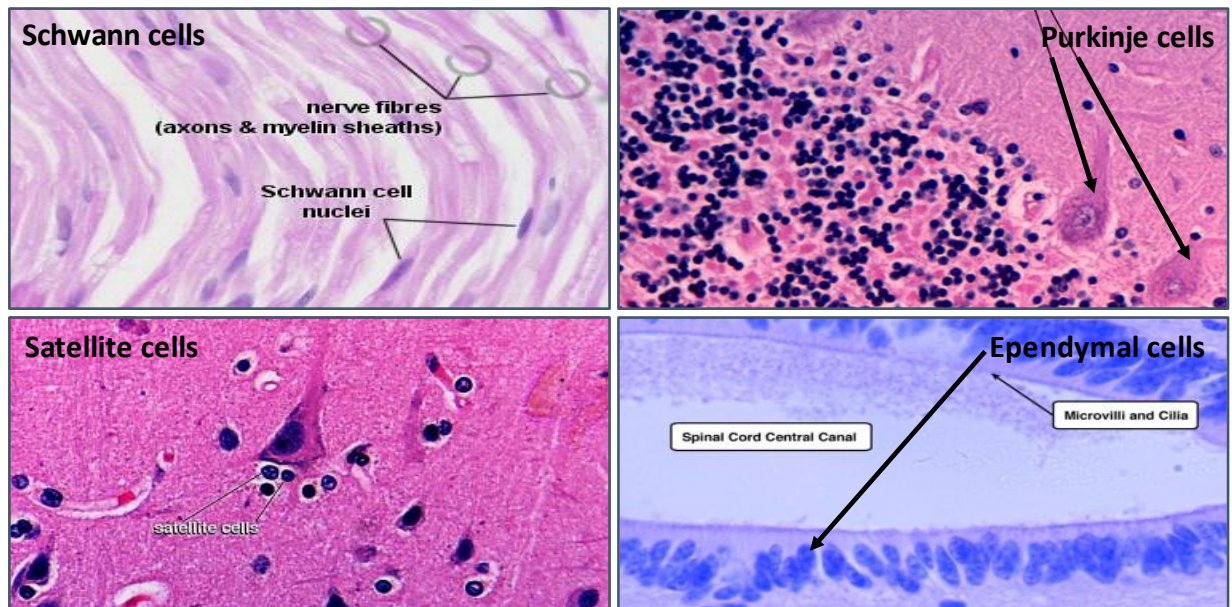
Brain cells (neurons)



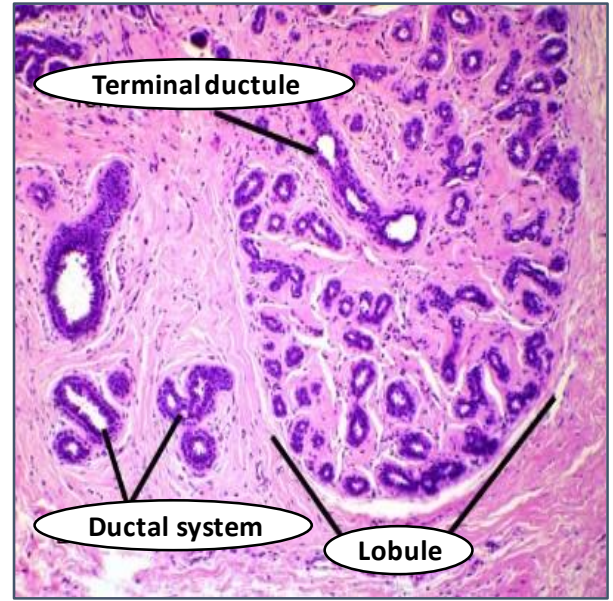
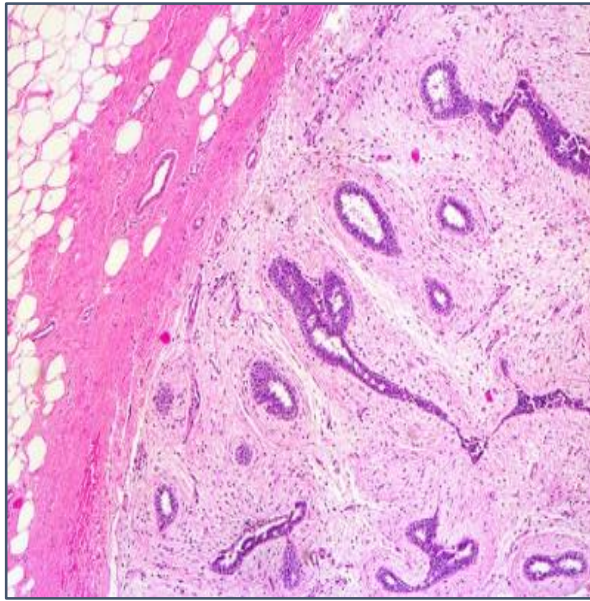
Brain cells (neuroglia)



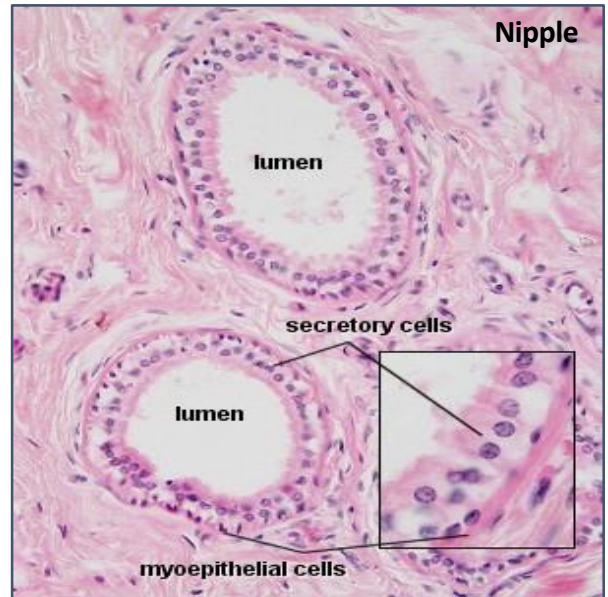
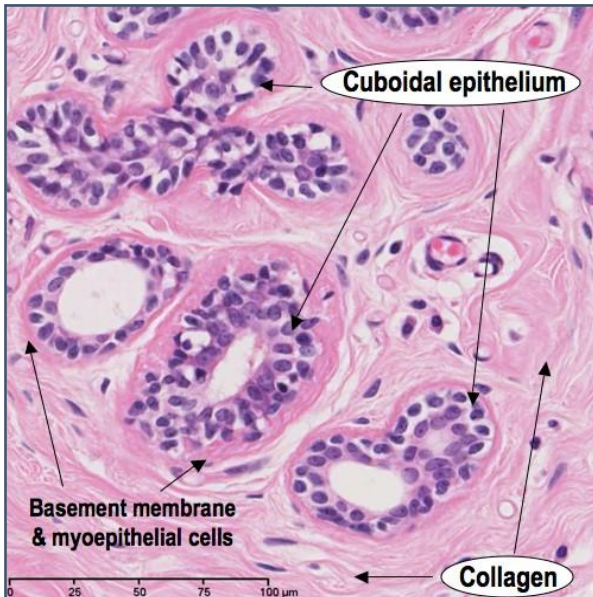
Brain cells (others)



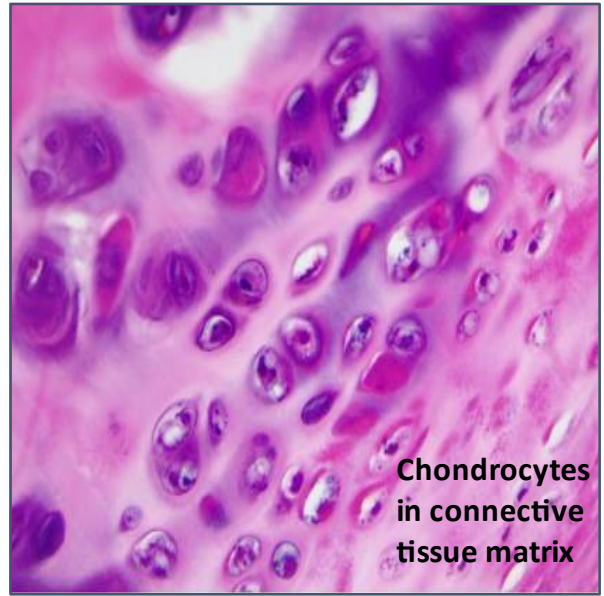
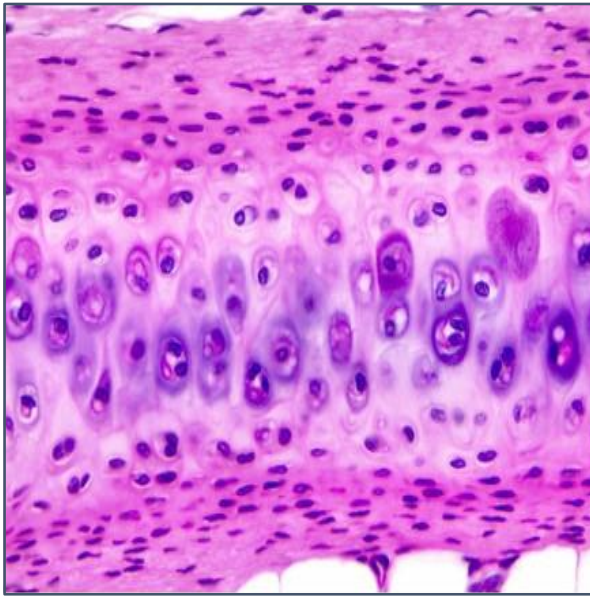
Breast



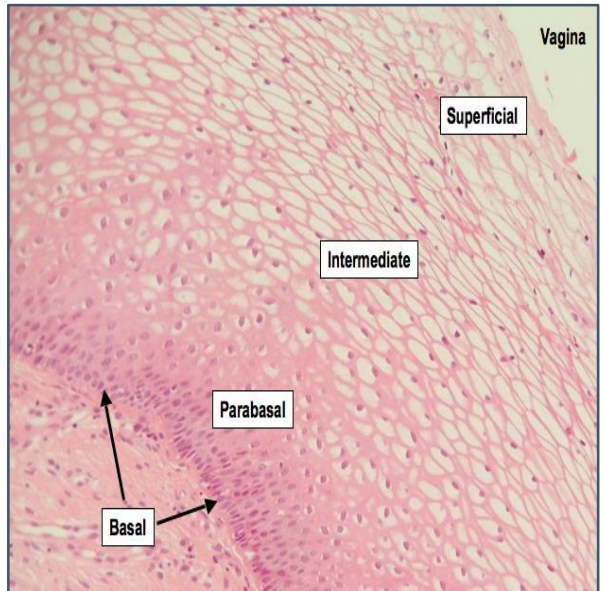
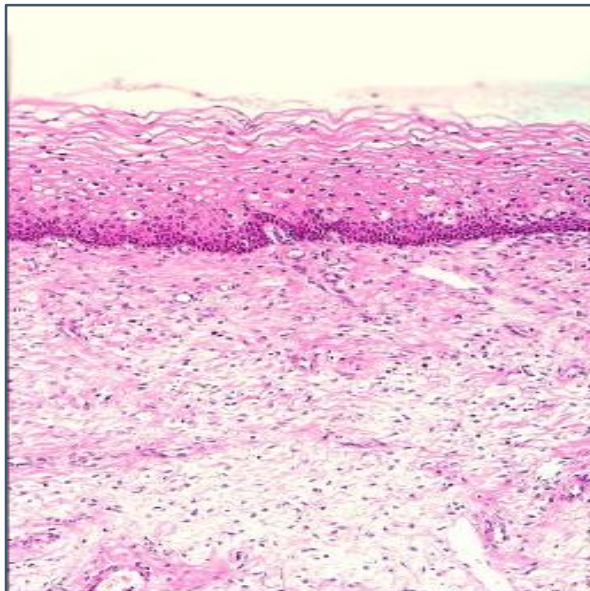
Breast



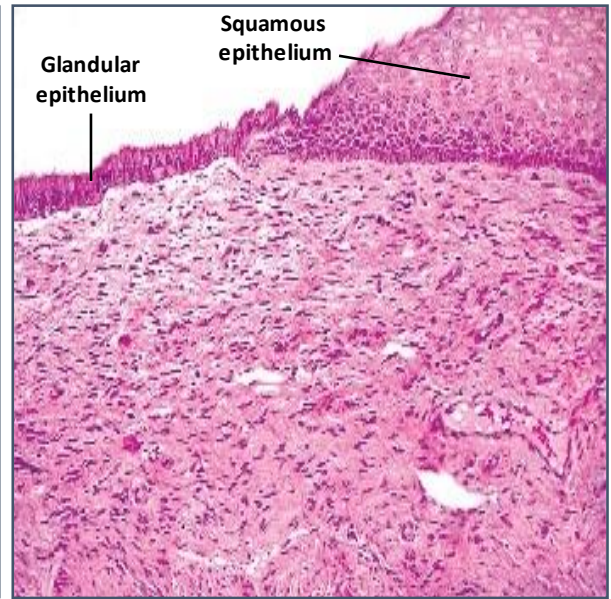
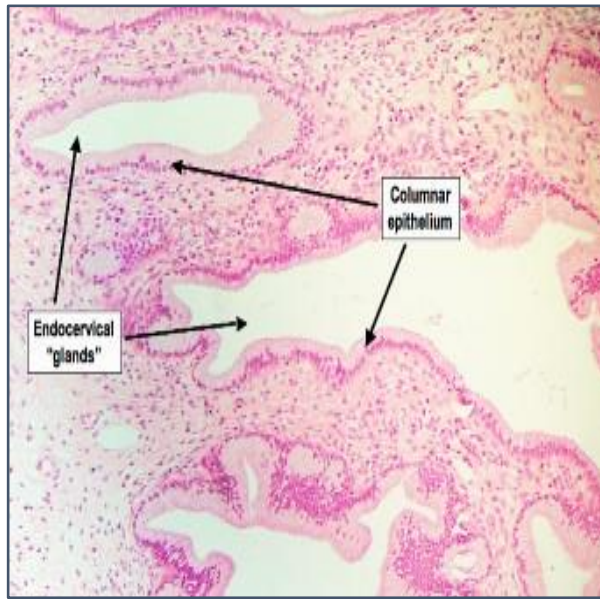
Cartilage



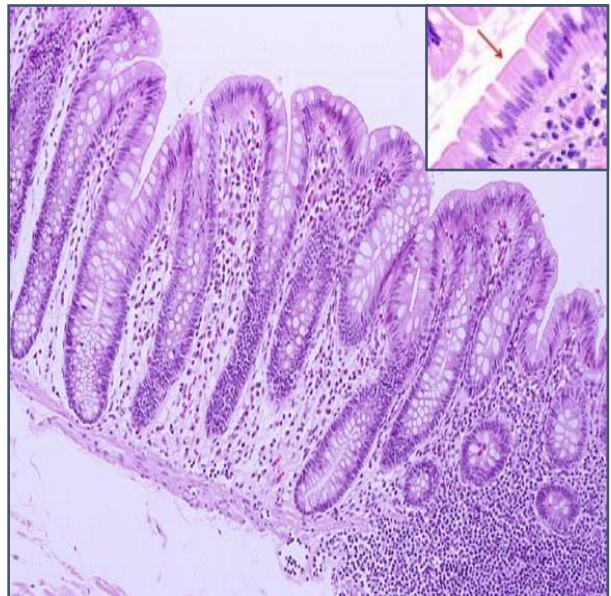
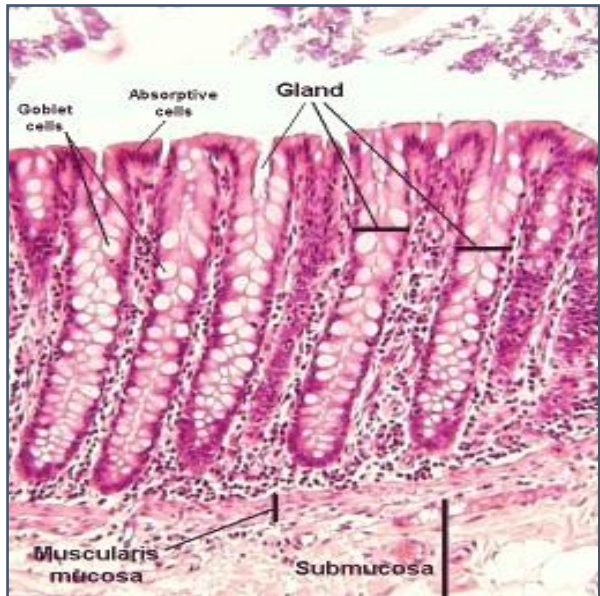
Cervix



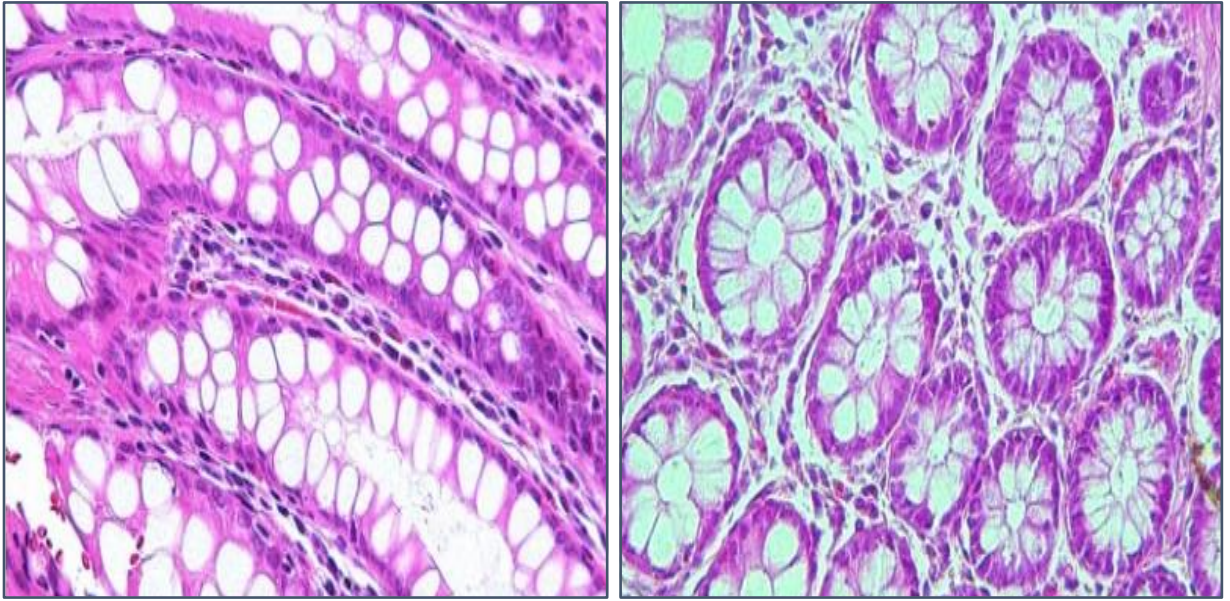
Cervix (endocervix and transformation zone)



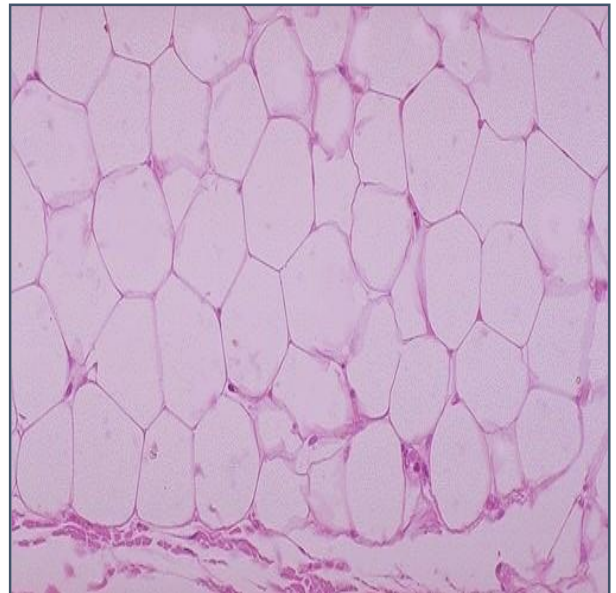
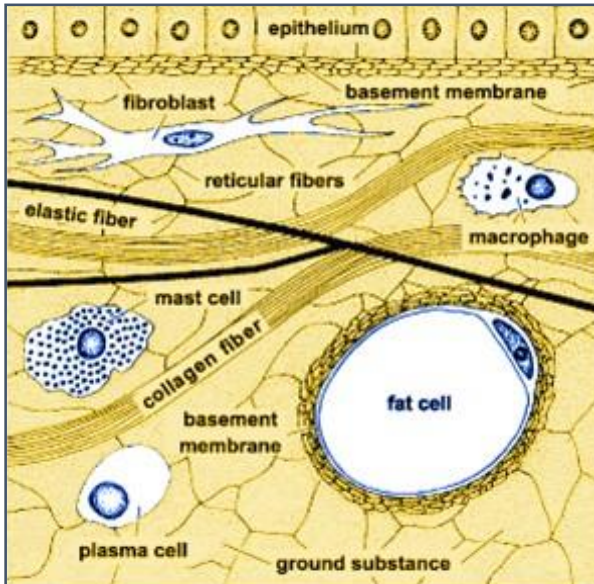
Colon



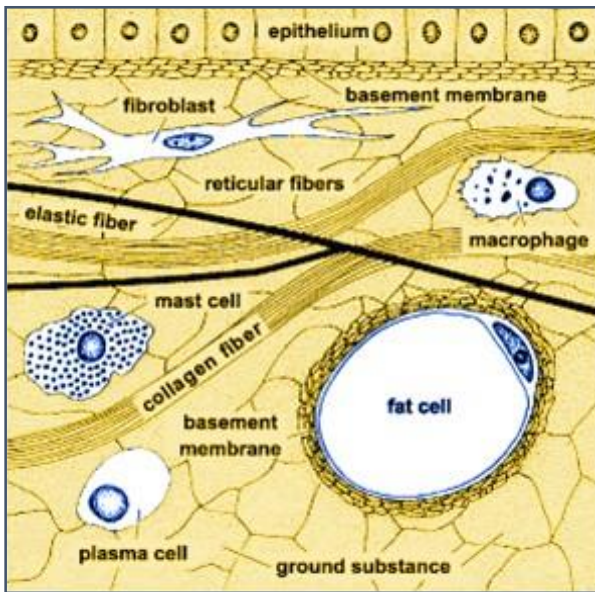
Colon



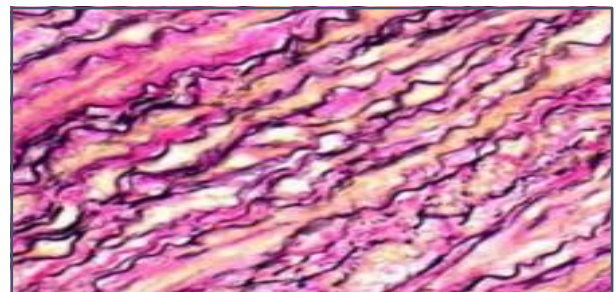
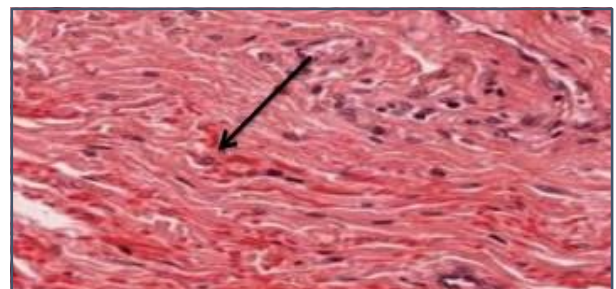
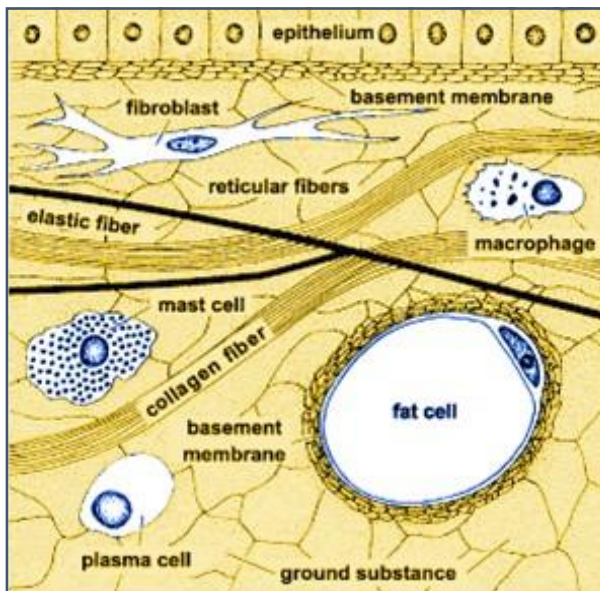
Connective tissue - Adipose (Fat)



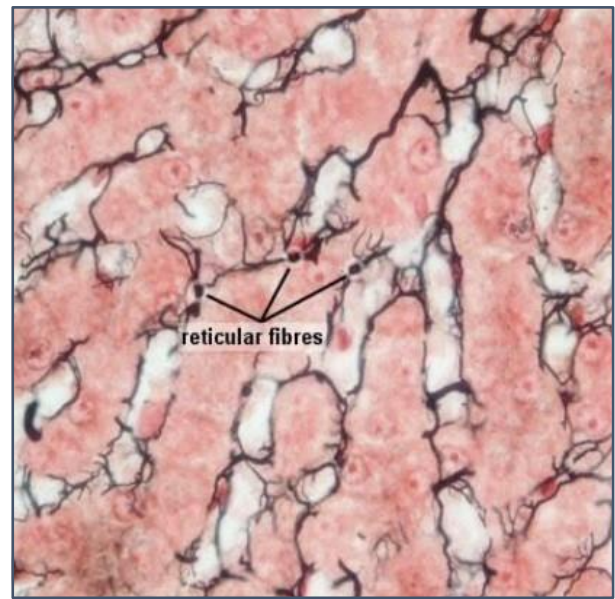
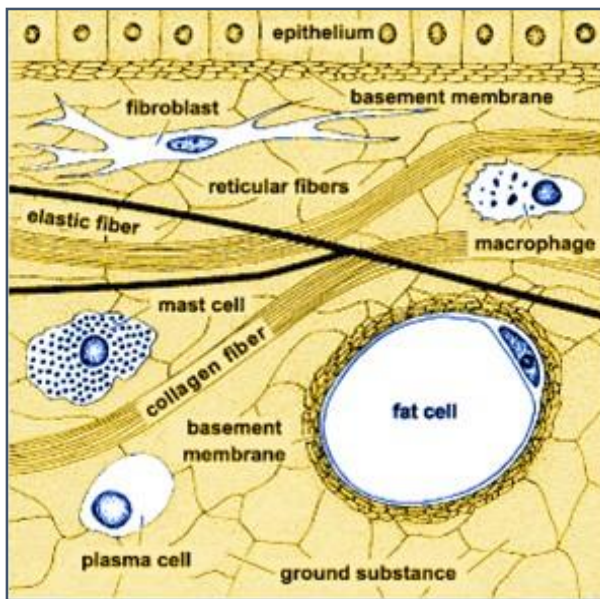
Connective tissue - Collagen



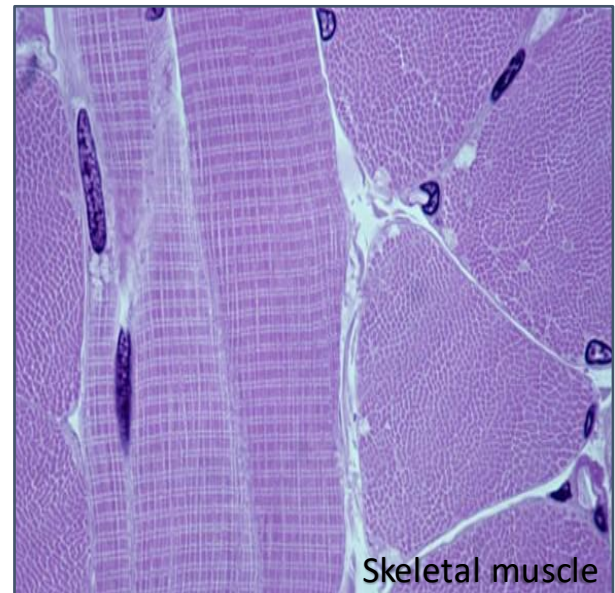
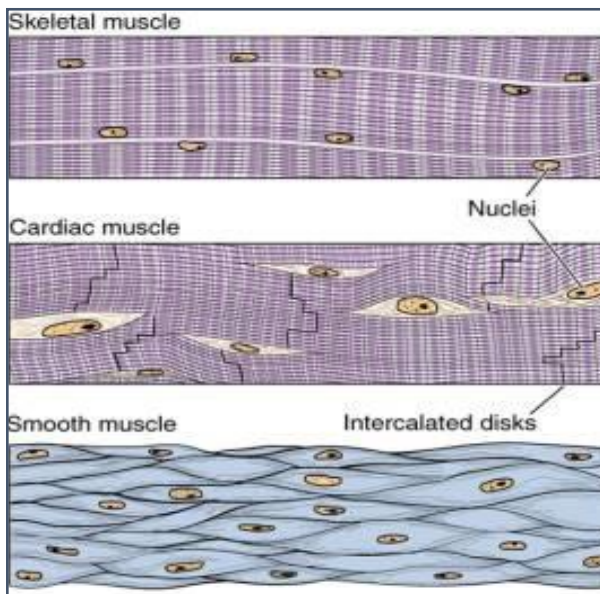
Connective tissue - Elastin



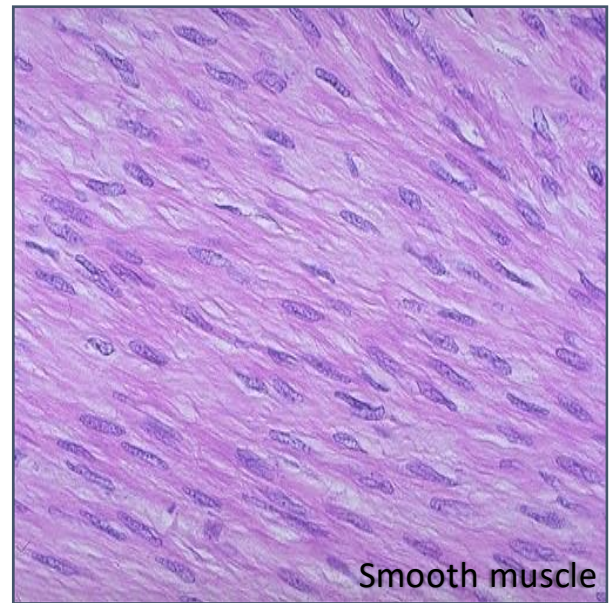
Connective tissue - Reticulin



Connective tissue - Muscle



Connective tissue - Muscle



Epithelium (classification)

On the basis of:

NUMBER OF LAYERS

SIMPLE (made of single cell layer)

STRATIFIED (made of many cell layer)

CELL SHAPE

Nucleus

Basement membrane

Simple squamous epithelium

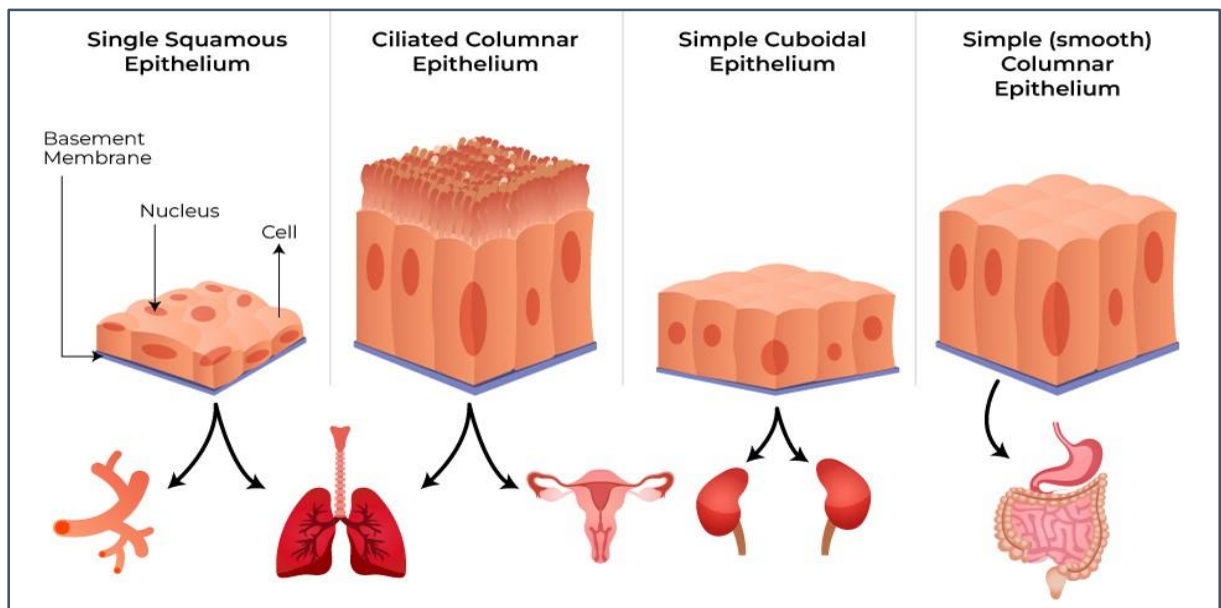
Simple cuboidal epithelium

Simple columnar epithelium

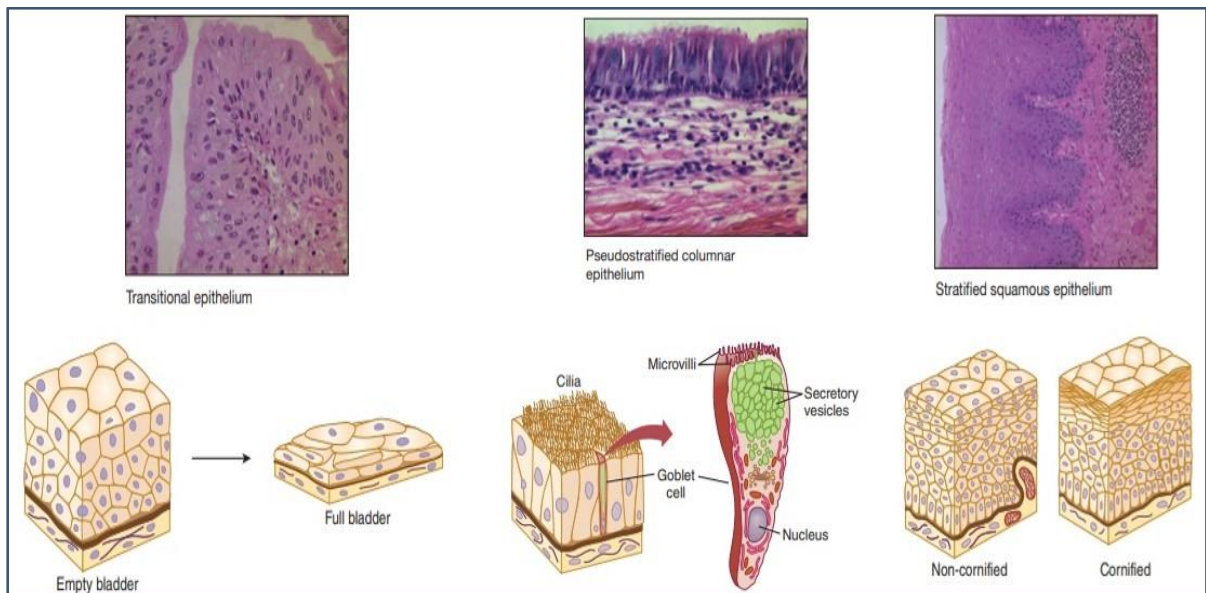
Gap junctions

Tight junctions

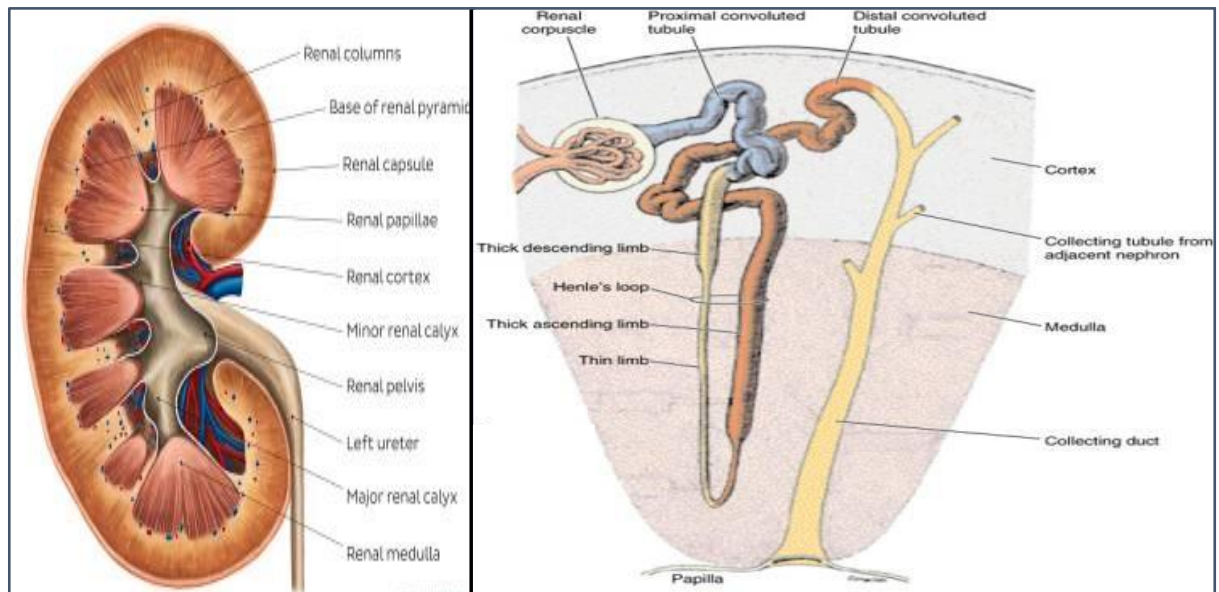
Epithelial cell type and distribution



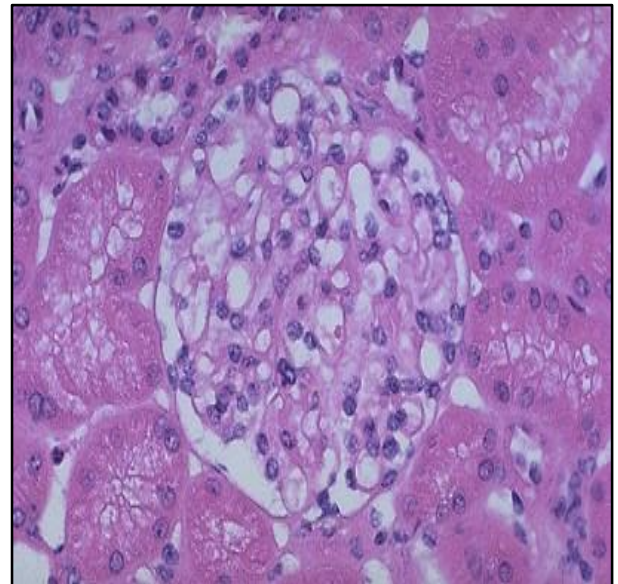
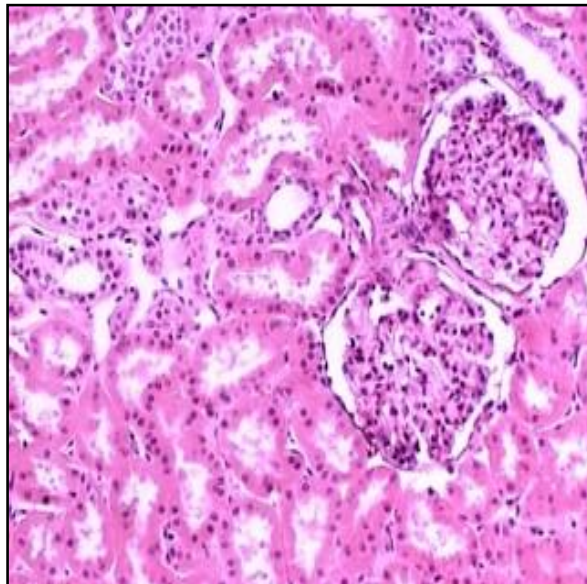
Epithelial cell type and distribution



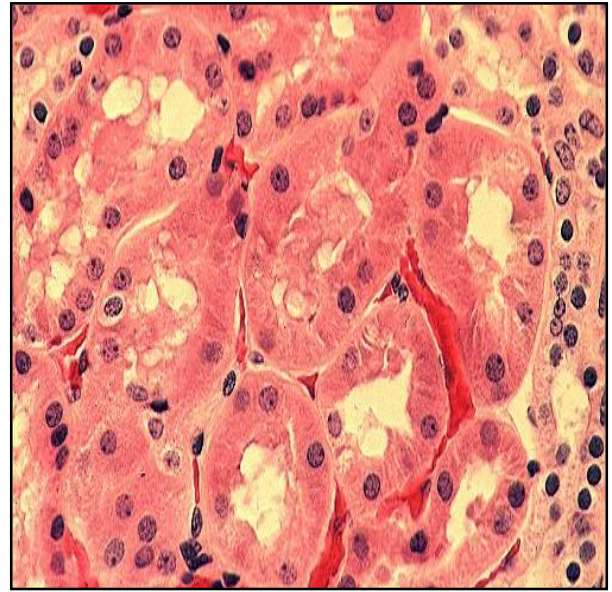
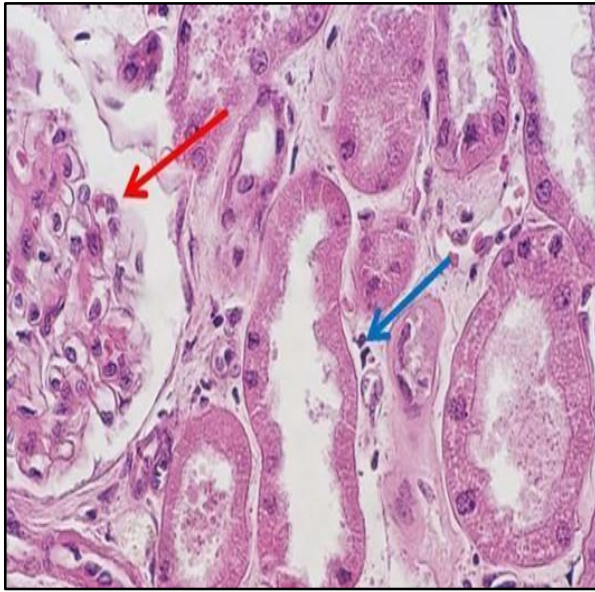
Kidney



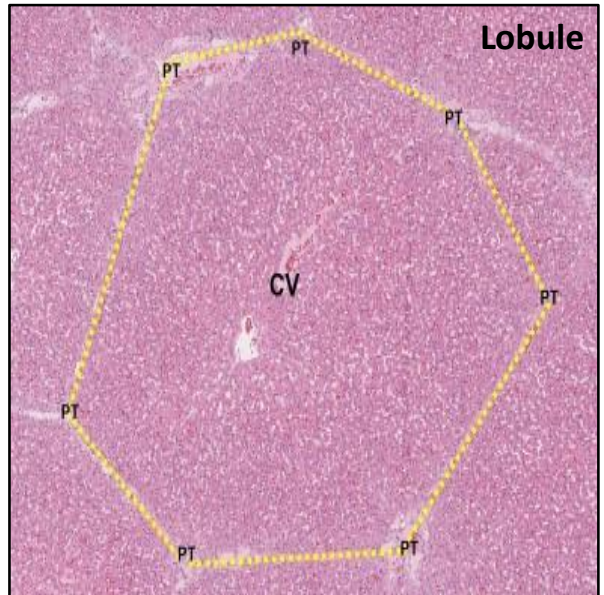
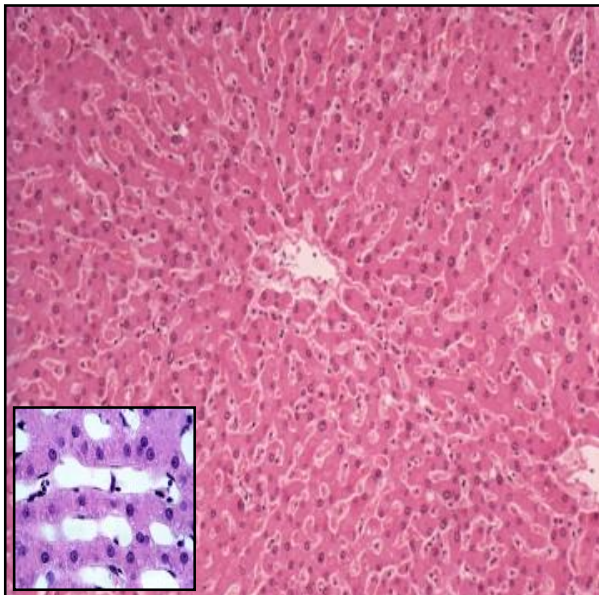
Kidney - glomeruli



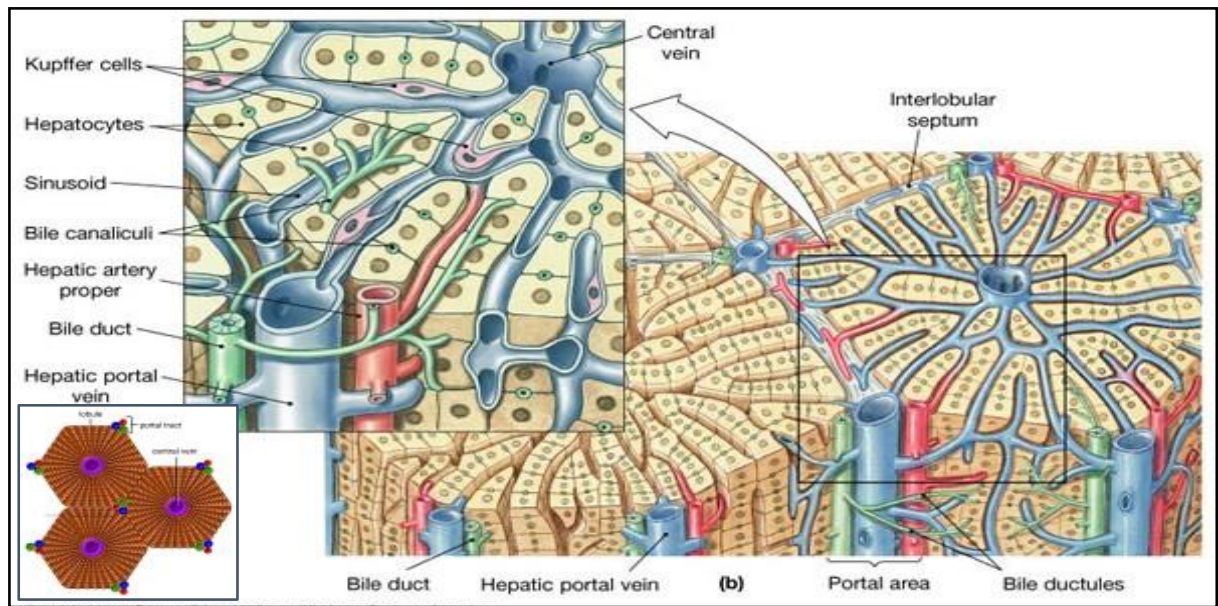
Kidney - tubules



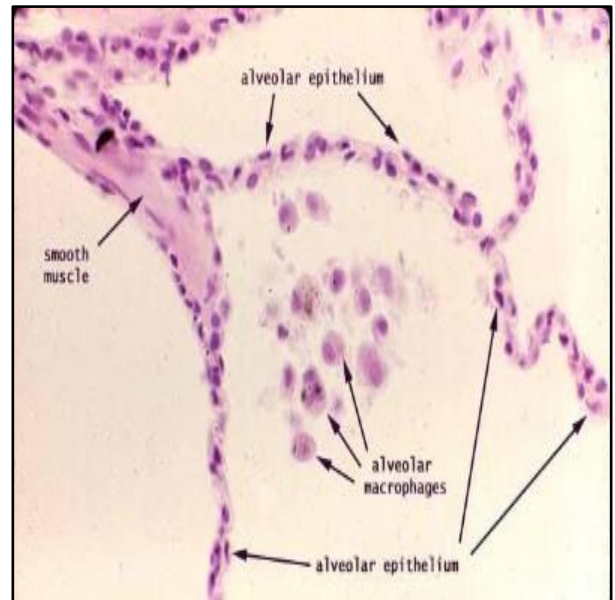
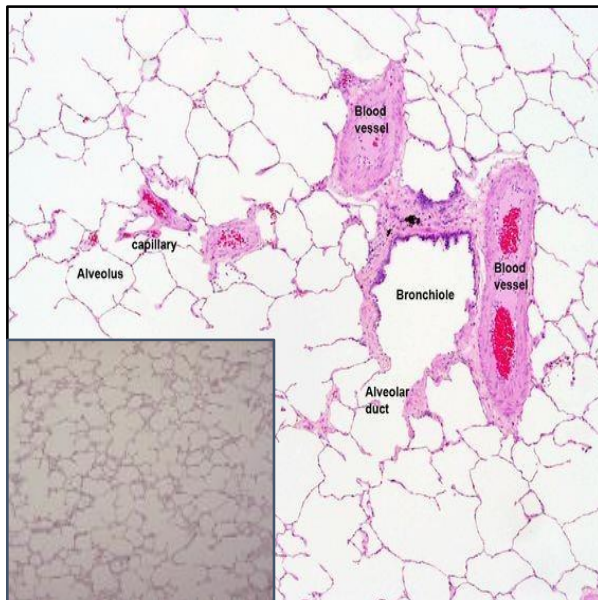
Liver



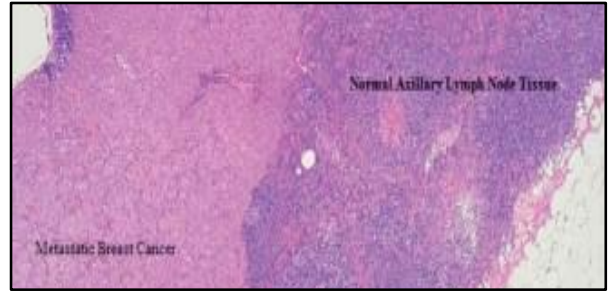
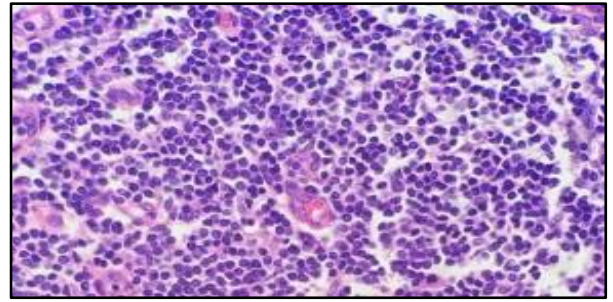
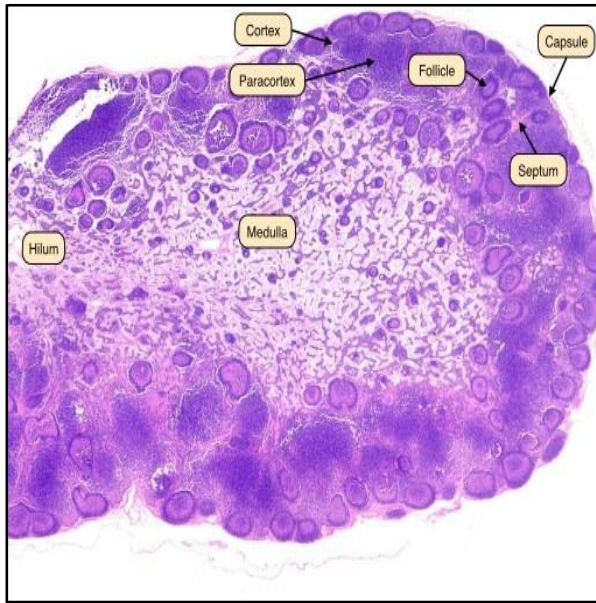
Liver structure



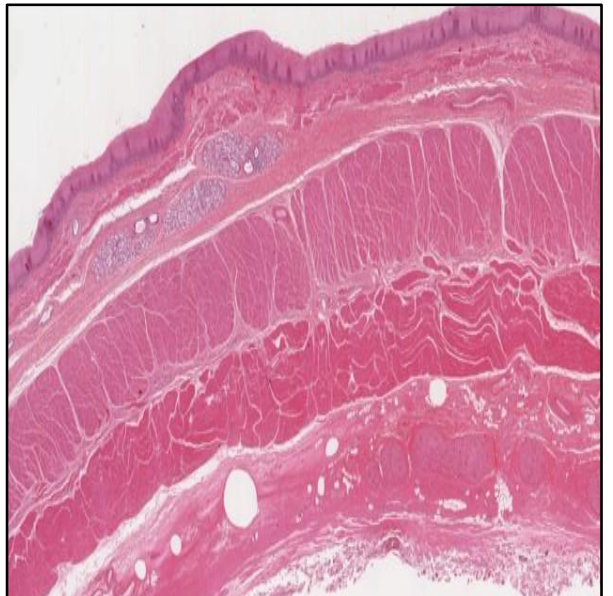
Lung



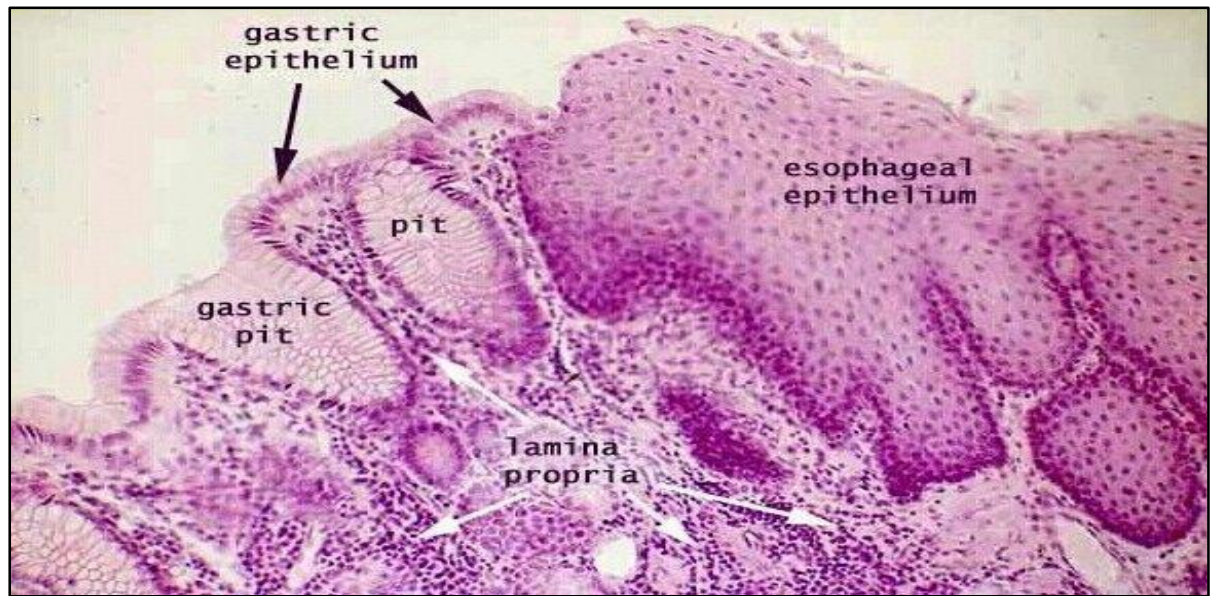
Lymph node



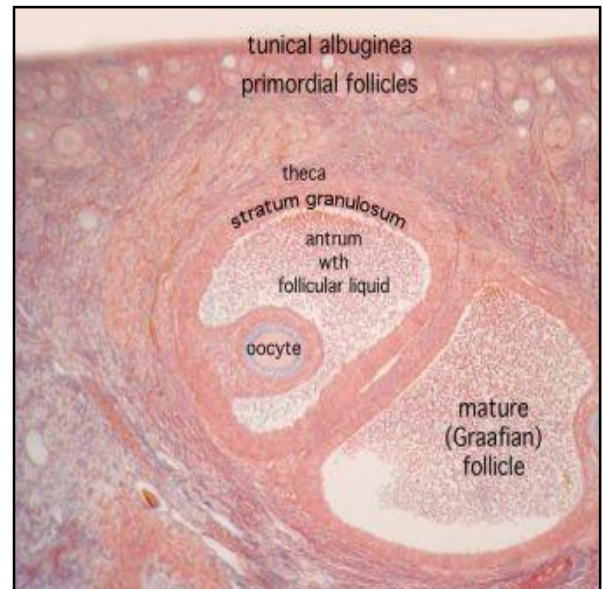
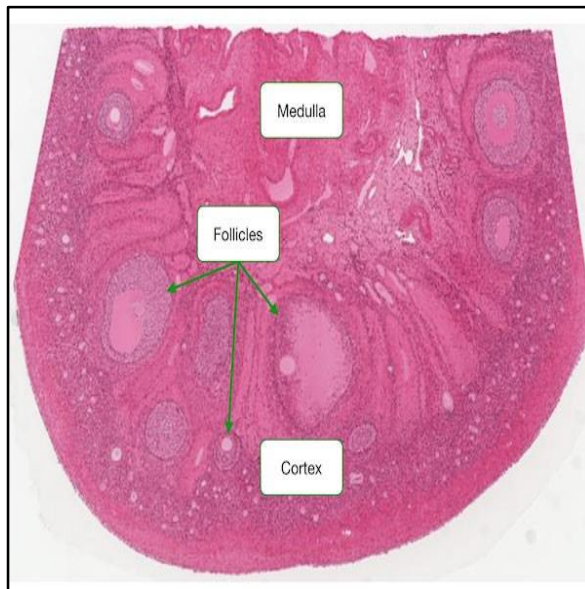
Oesophagus



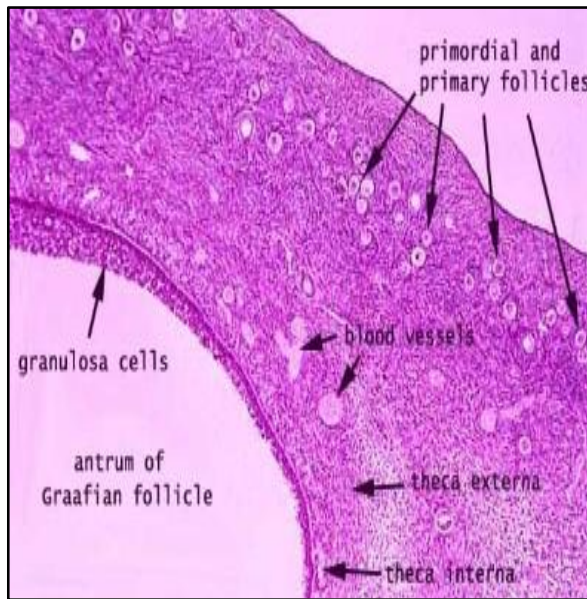
Oesophageal and gastric (OG) junction



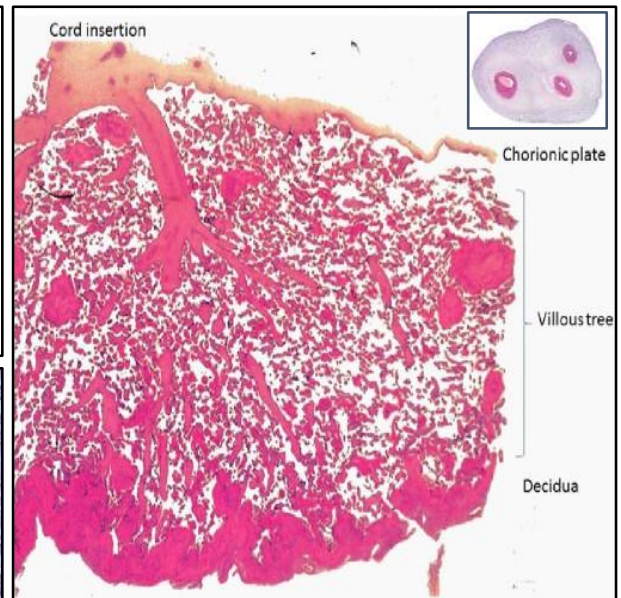
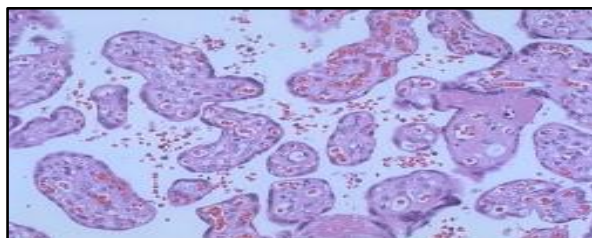
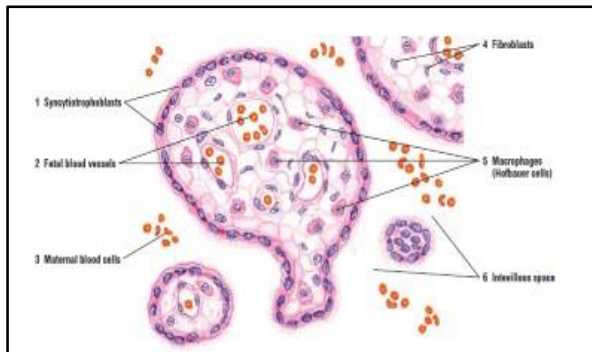
Ovary



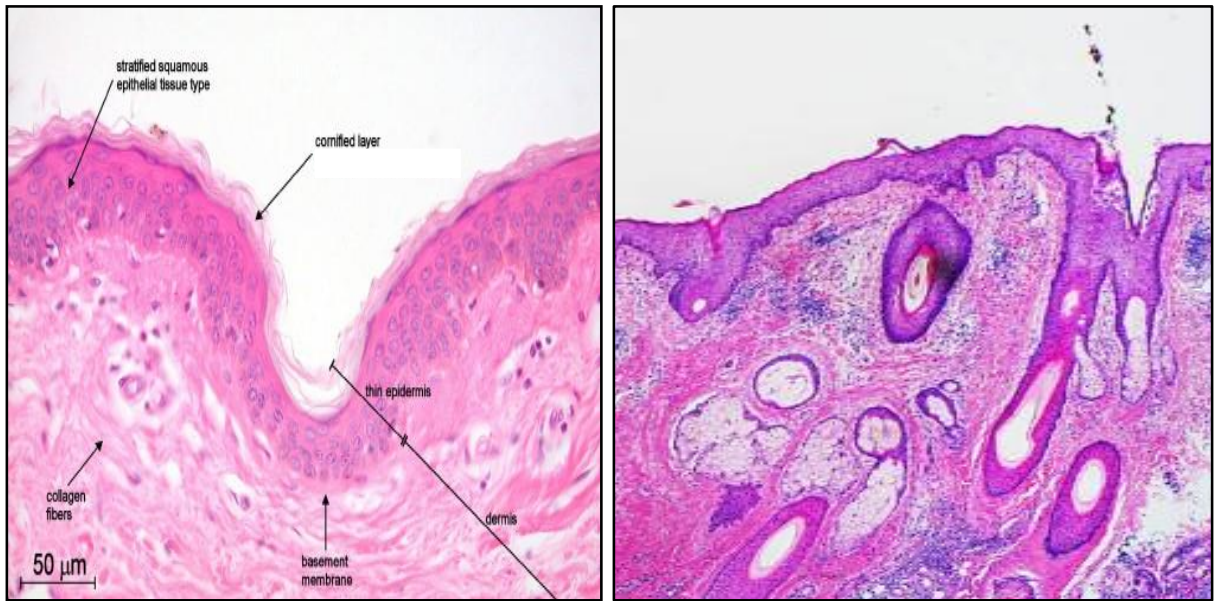
Ovary and fallopian tube



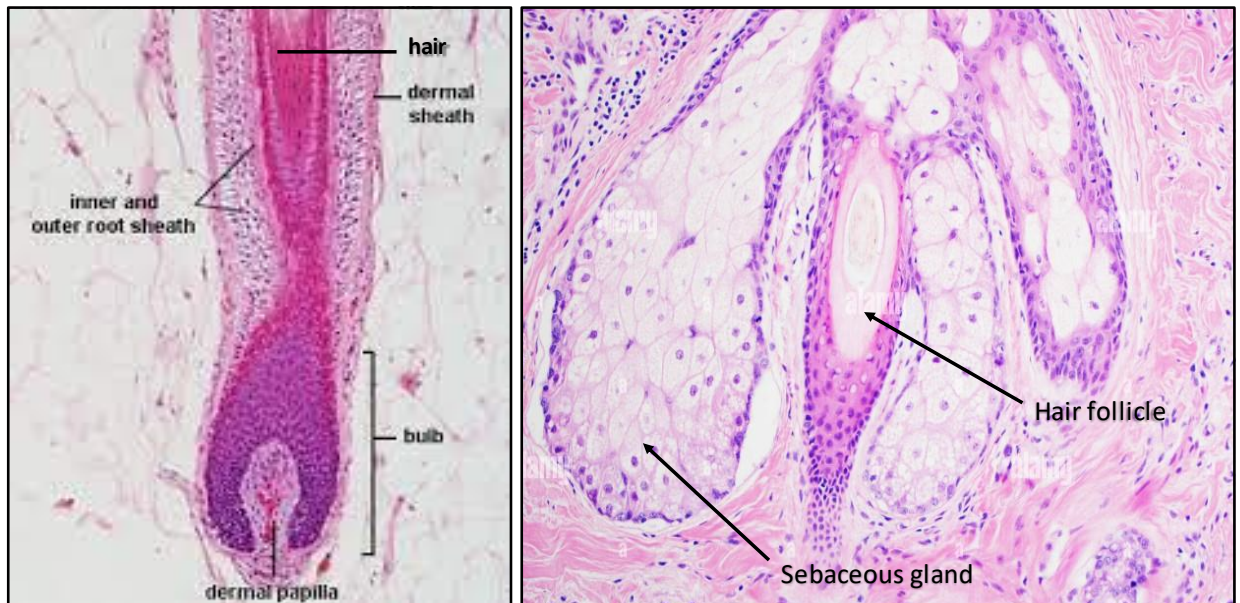
Placenta and cord



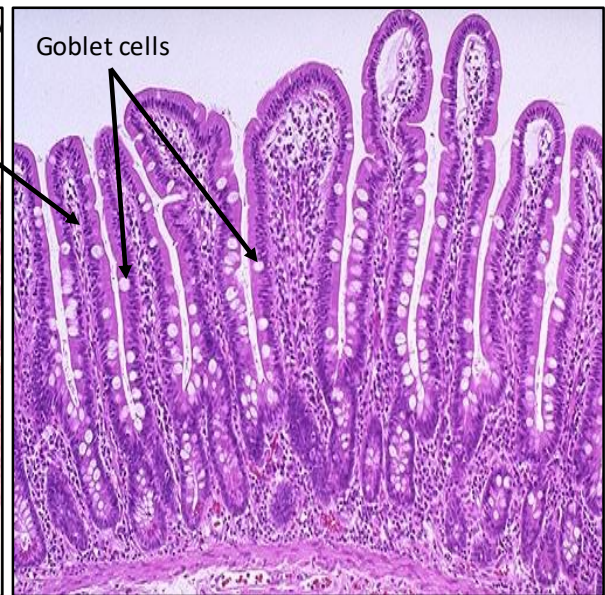
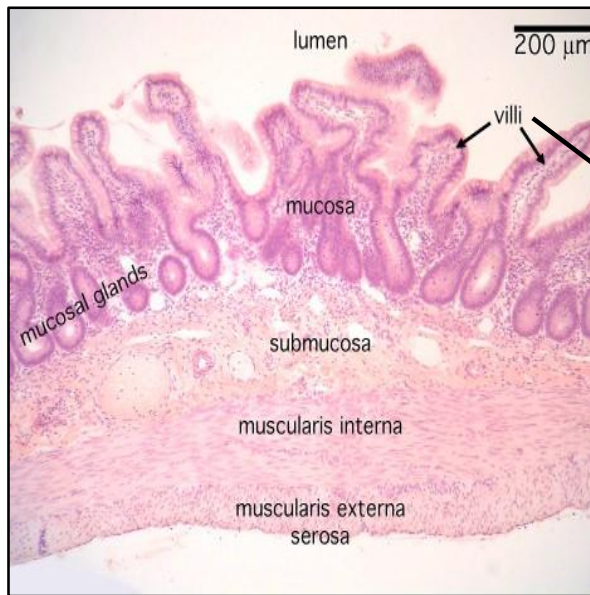
Skin



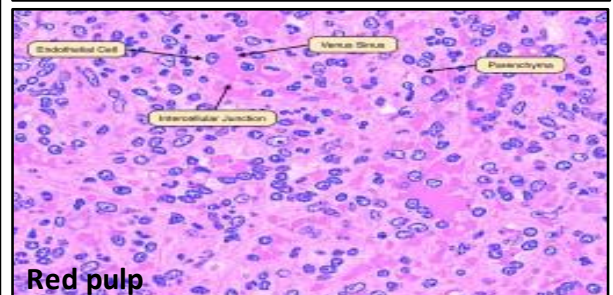
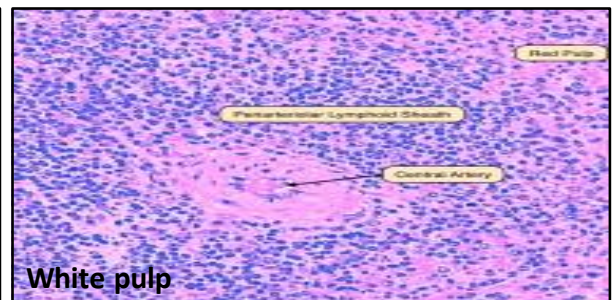
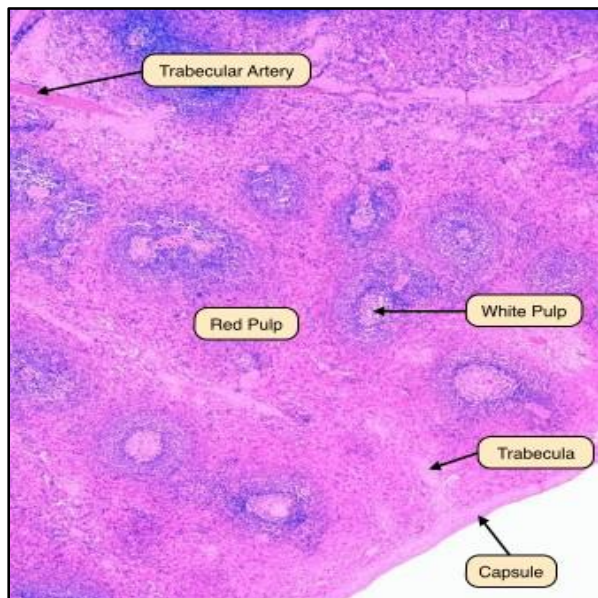
Skin with hair follicle



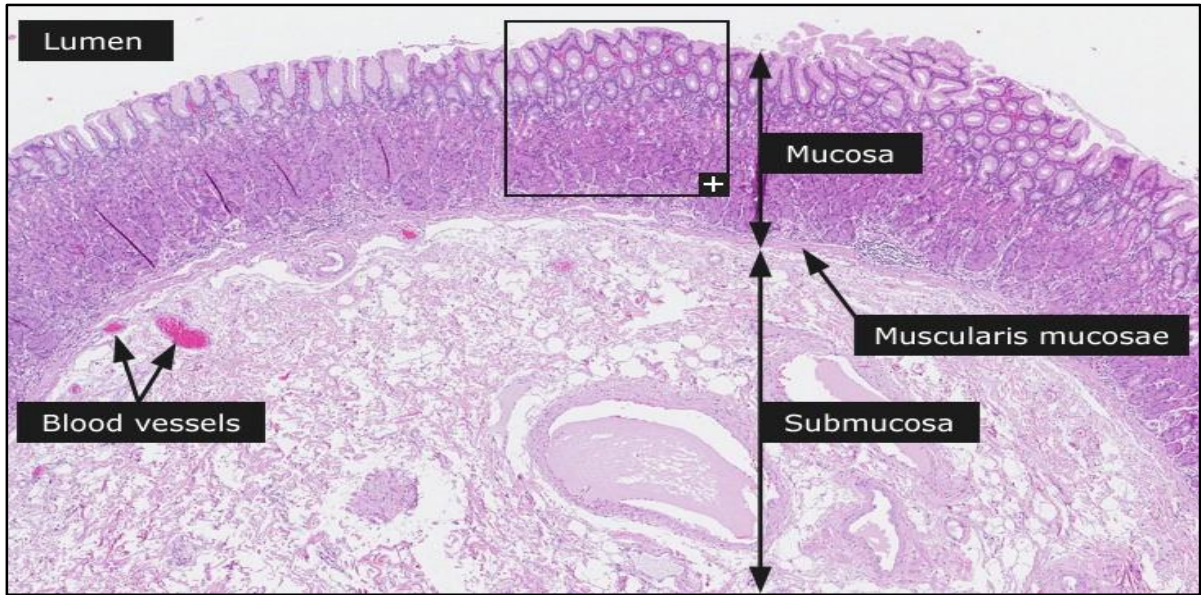
Small bowel



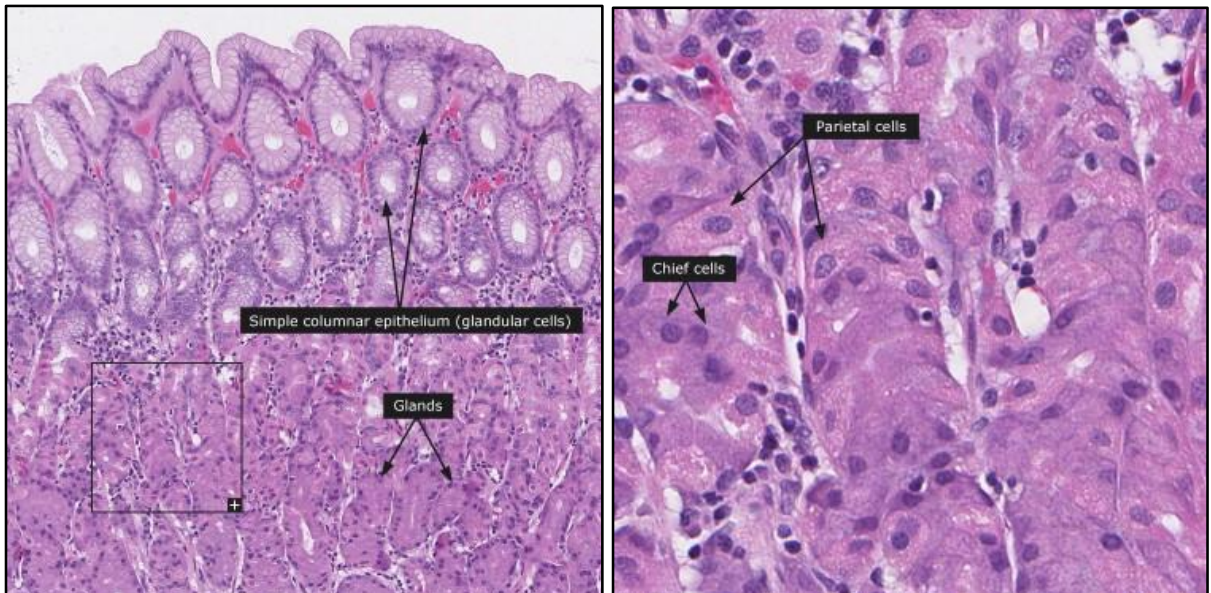
Spleen



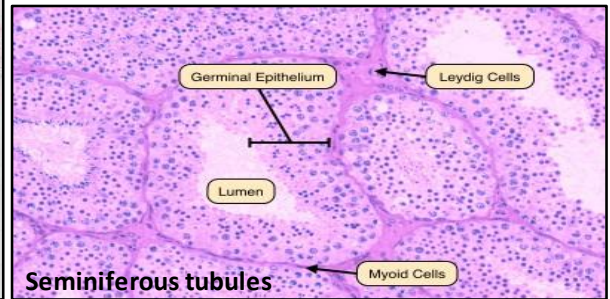
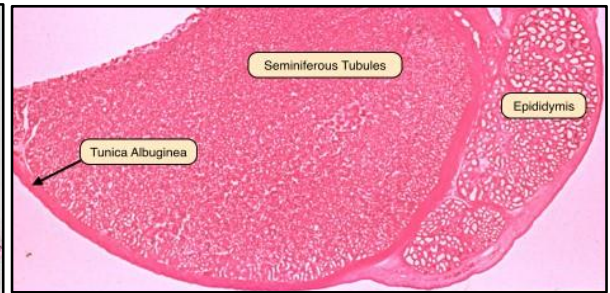
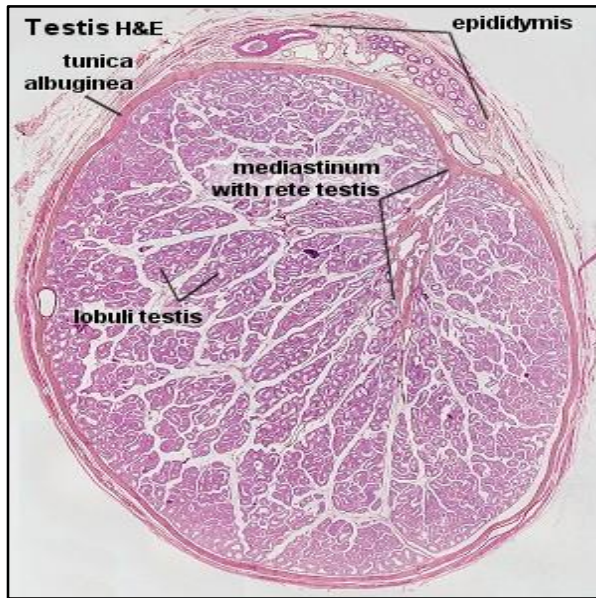
Stomach



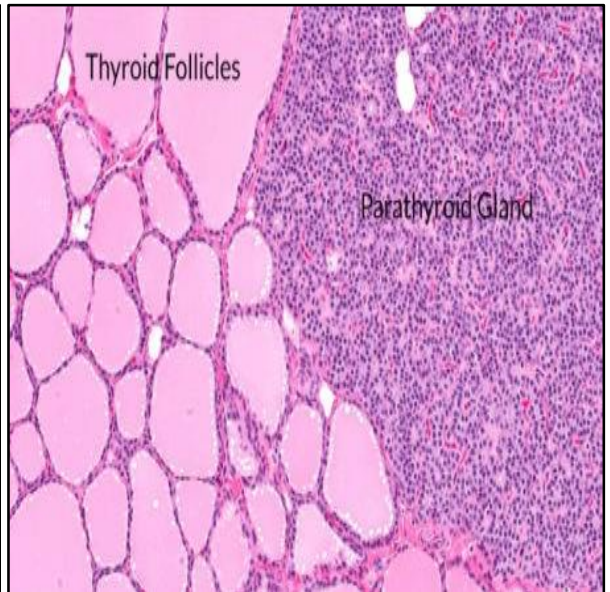
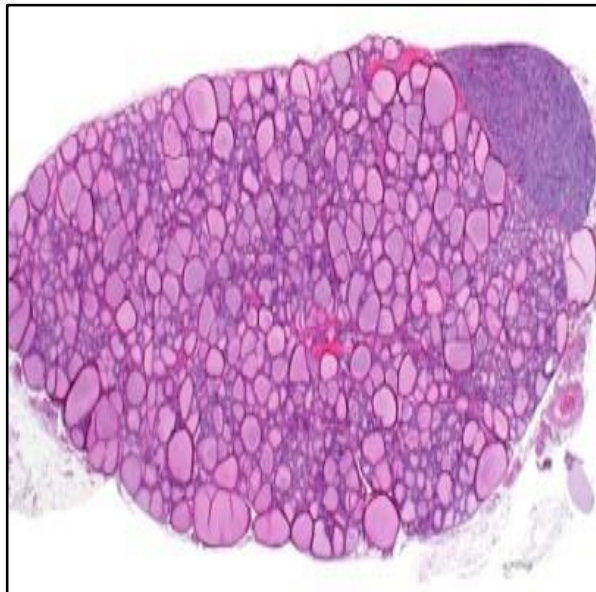
Stomach



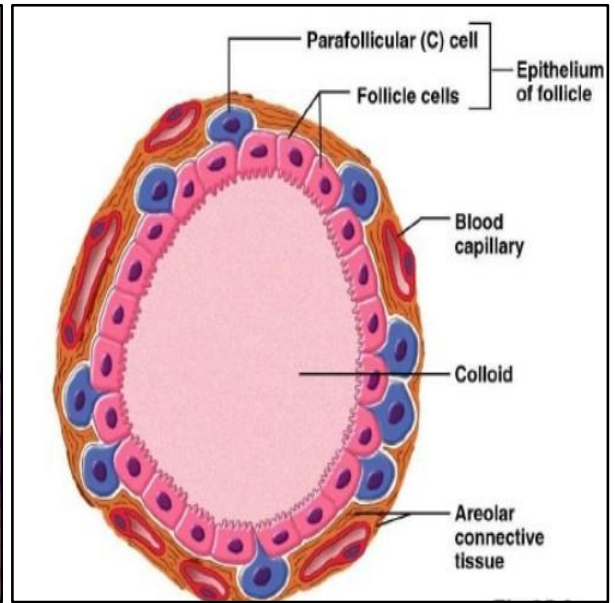
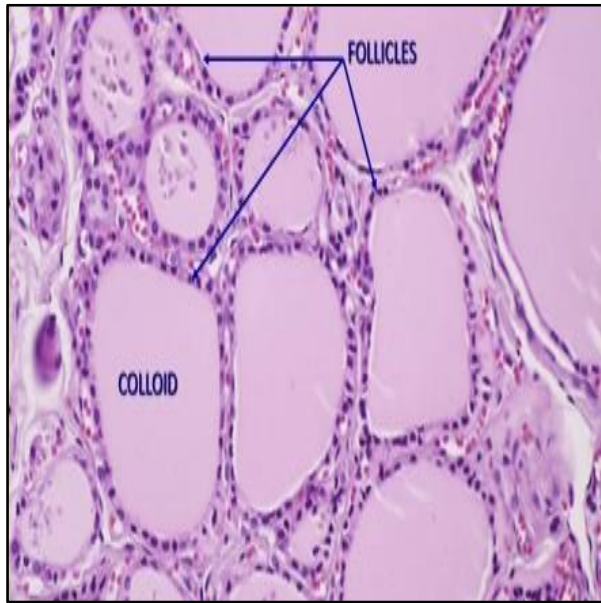
Testis



Thyroid and parathyroid



Thyroid follicles



Uterus

